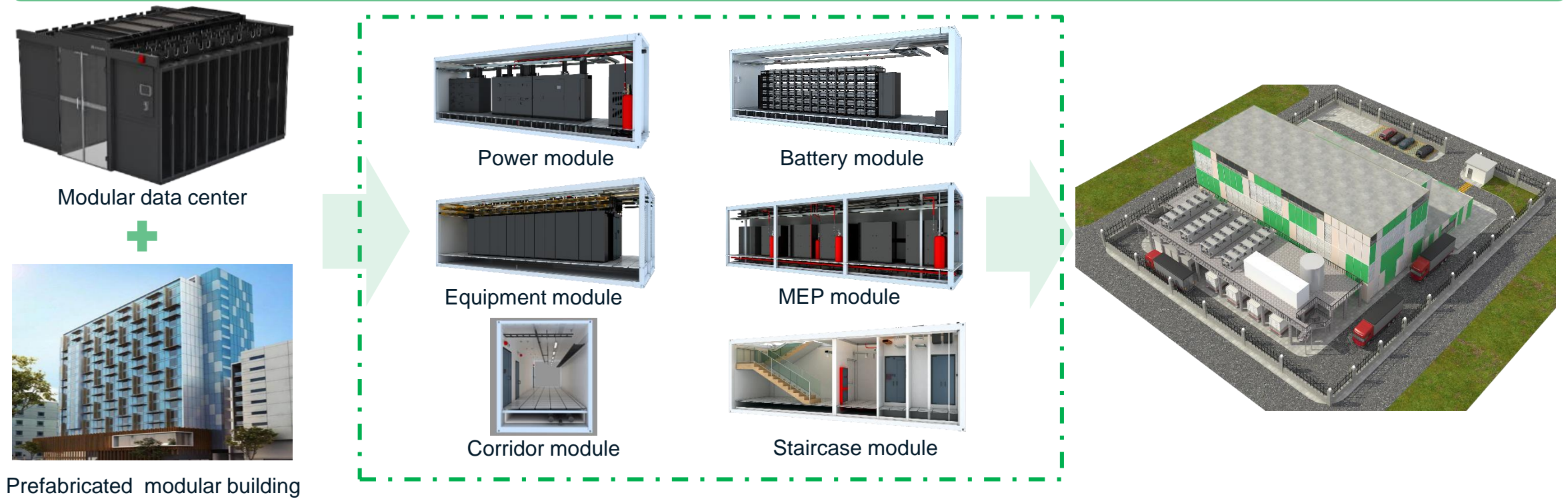


# FusionModule1000B Prefab Modular Solution

## What is Prefab Modular DC? Modular DC + Prefabricated Modular Building



## Shorten TTM by 50%+, Quickly Deploy a High Quality DC in Environment Friendly Way

### In parallel construction

Module prefabrication, equipment pre-installed



Civil work are performed



### Minimum onsite work

Modules only need to be hoisted and connected on site



Interior connection and commission



1000 Racks Public Cloud DC @China

9 month

More than 20 month

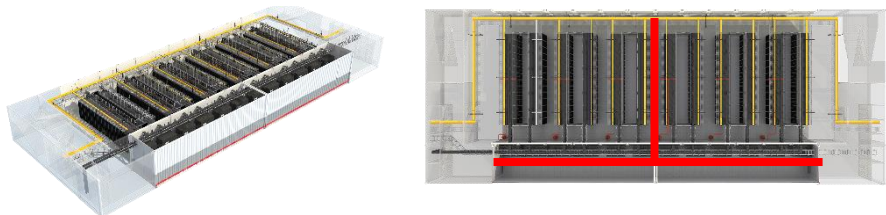
400+ Racks Cloud DC @Middle East

15 month

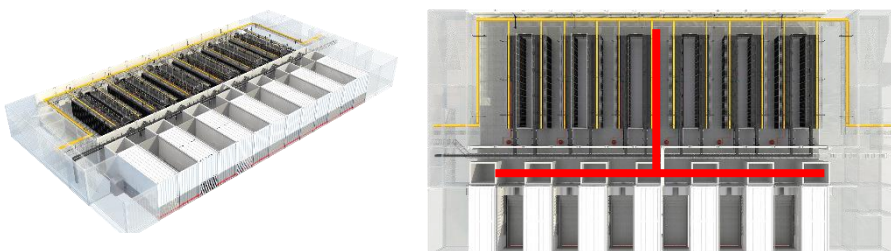
More than 30 month

## T-shape Architecture : Adaptable to Various Scenarios

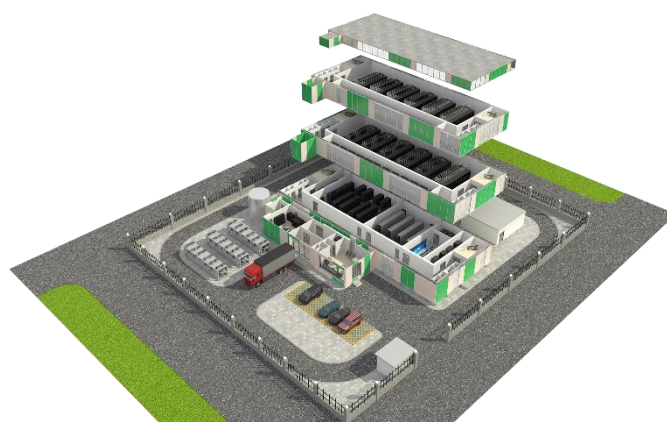
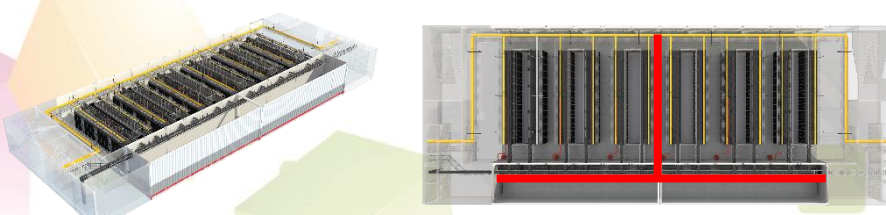
Perimeter (in-Room) Cooling Scenario



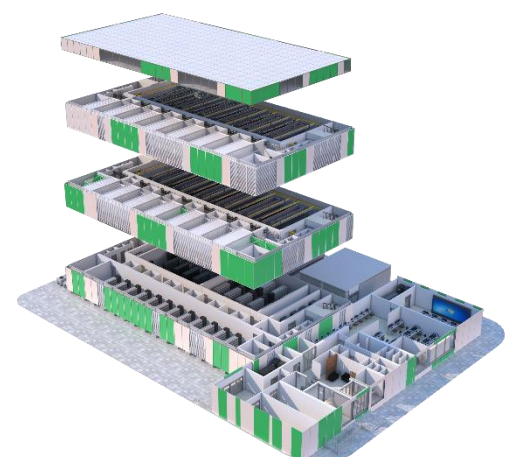
Indirect Evaporating Cooling (Freecooling) Scenario



Close Coupled (in-Row) Cooling Scenario



in-Room & in-Row Cooling Scenario



Indirect Evaporative Cooling Scenario





## AI Enablement to Reduce OPEX , 2-Year Quicker ROI than Traditional DC


**ROI** Shorten ROI 2 years @ Middle East



**↓50%+** 30+ to 15 months(ME)  
20+ to 6 months(China)

**TTM**



**↓10%+**

**Initial Investment**

On-demand deployment with POD design



**↑20%** iManager NetEco6000@AI  
O&M cost reduced by 35%  
Resource utilization increased by 20%

**O&M**



**↓8%**

**Power**

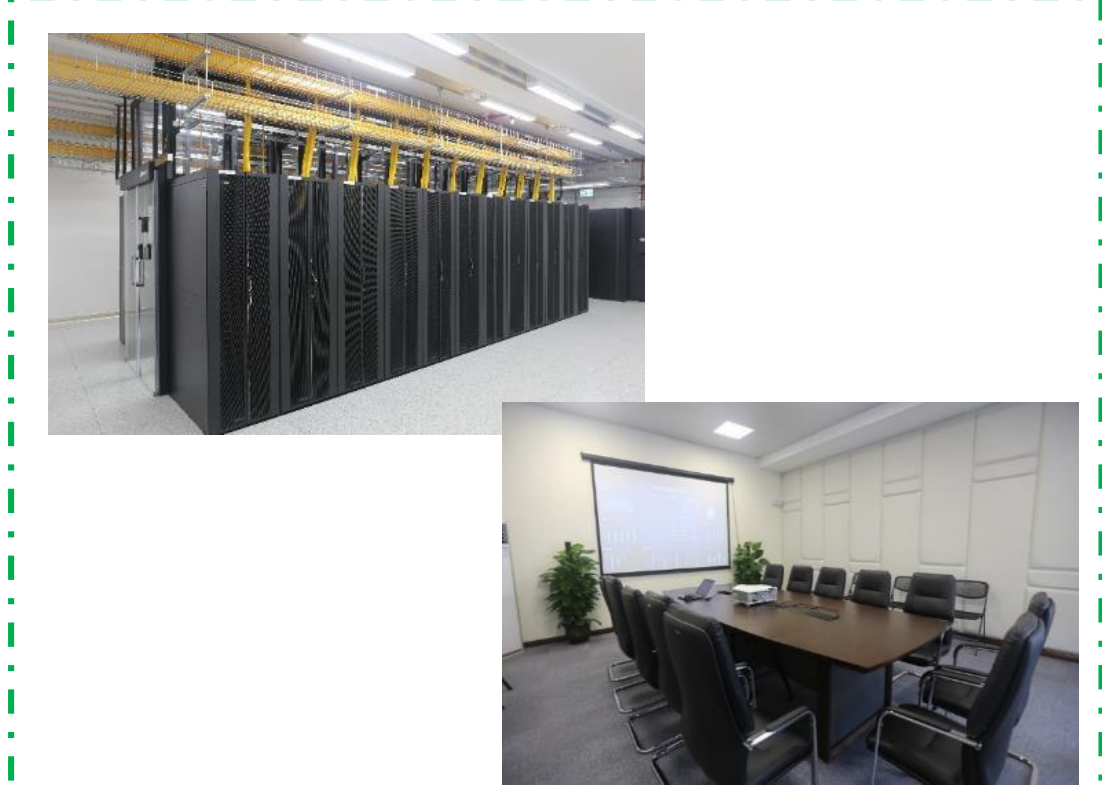
iCooling@AI  
Cooling efficiency optimized  
and PUE lowered by 8%-15%

## Tailored Facade & 4.15m Extra-high Module Bring Outstanding Using Experience

Customized cladding with different styles



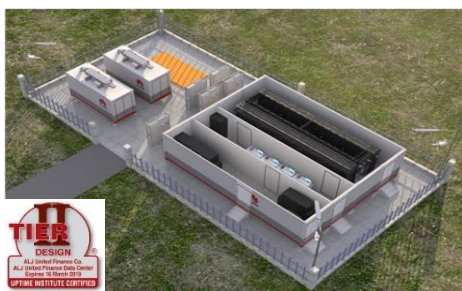
Modular data hall and office



## Successful Cases & TIER Certifications



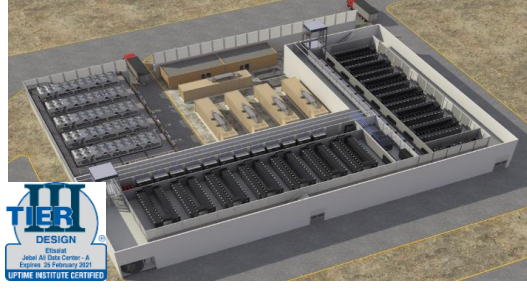
Botswana B Project, 48 racks



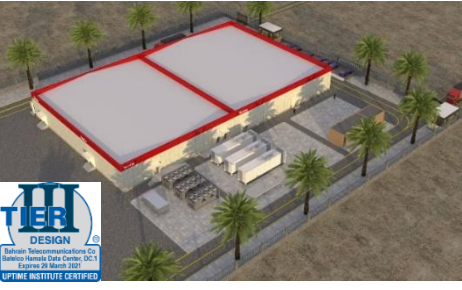
Saudi Arabia A Project, 24 racks



Dubai Airport, 100 racks



UAE E Project, 700 racks



Bahrain B Project, 1000 racks



UAE A Project, 700 racks

