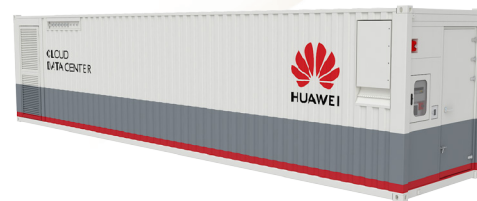


Prefabricated Data Center

FusionModule1000A Prefabricated All-in-One Data Center

Introduction

Huawei FusionModule1000A is an advanced outdoor and prefabricated all-in-one data center facility solution. The solution provides reliable, stable and green environment for IT equipment. The solution can be applied to multiple industries and scenarios and meet data center's requirements on energy saving and fast deployment.



FusionModule1000A 40ft

Applicable Industry and Scenario

Enterprise: small data center

Government: data center of smart city and safe city

Education: data center of university and science institute

Energy: data center of mining and exploration field

Finance: backup data center

Transportation: power supply for room of airport/railway station/port

Telecom carrier: small IDC, DR DC, edge DC



Features & Value

Simple

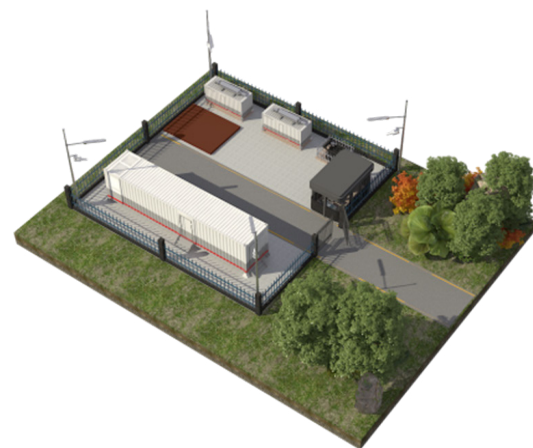
- Enclosure, power, cooling, firefighting, DCIM system, server and switch are prefabricated. All facilities are preinstalled and pretested before delivery.
- Productized solution minimizes the engineering work and the on-site installation of a plug& play data center only takes one day.
- Moveable design makes relocation easy and deployment flexibly.

Efficient

- High-efficiency modular UPS, smart in-row cooling, aisle containment, enclosure of low heat transfer coefficient, industry-leading PUE
- Huawei NetEco system centralizes the management of multiple sites. 3D visualized management, power&cooling monitoring enable smart O&M
- Efficient O&M anywhere& anytime with PAD and mobile APP

Reliable

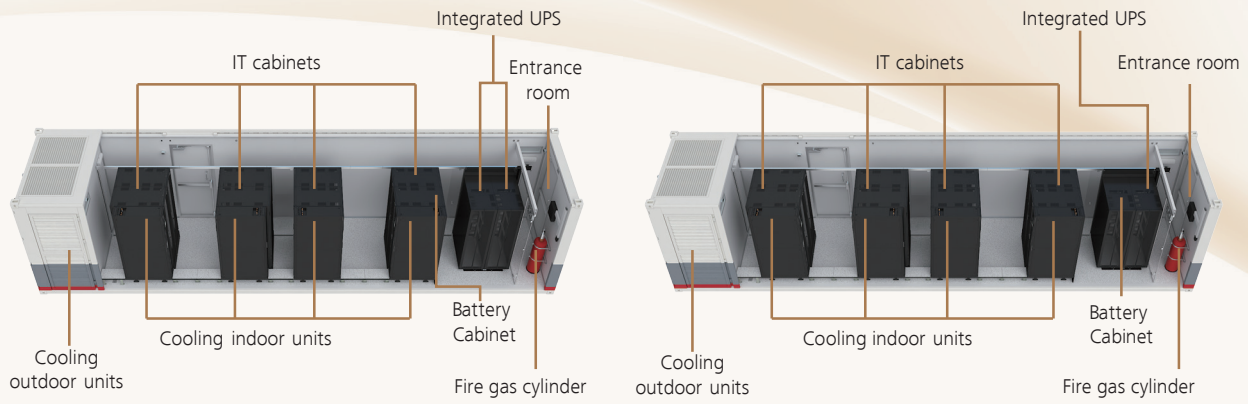
- The world's first all-in-one product with Uptime TIER-III Ready Certification
- Durable enclosure with 25-year service life, IP55 protection (IP65 optional) and GR-63-CORE Zone3 anti-seismic 120min fire-resistance when with customized fire-proof panel, EN 1627~EN 1630 Class 3 anti-theft (optional)
- 3D temperature map eliminates the risk caused by hot spots. Automatic refrigerant detection provides early-alarm on cooling running.



FusionModule1000A Site

Layout

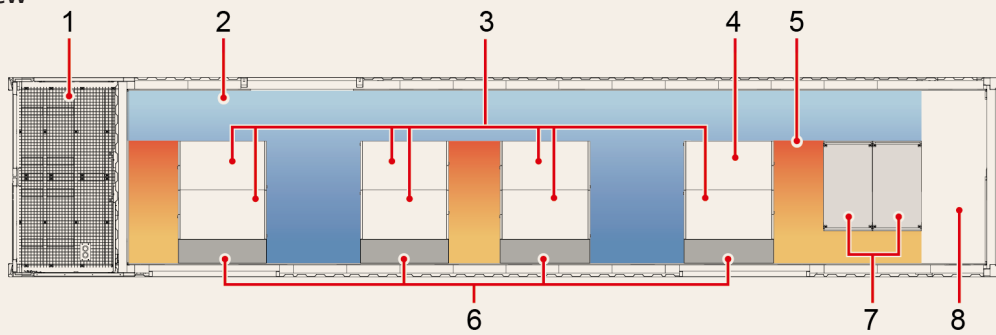
Layout



FusionModule1000A-40ft-IT-2N

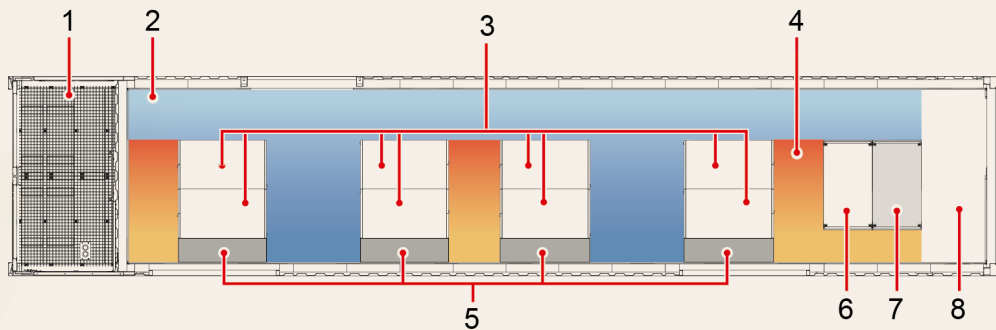
FusionModule1000A-40ft-IT-N+X

Plan View



FusionModule1000A-40ft-IT-2N

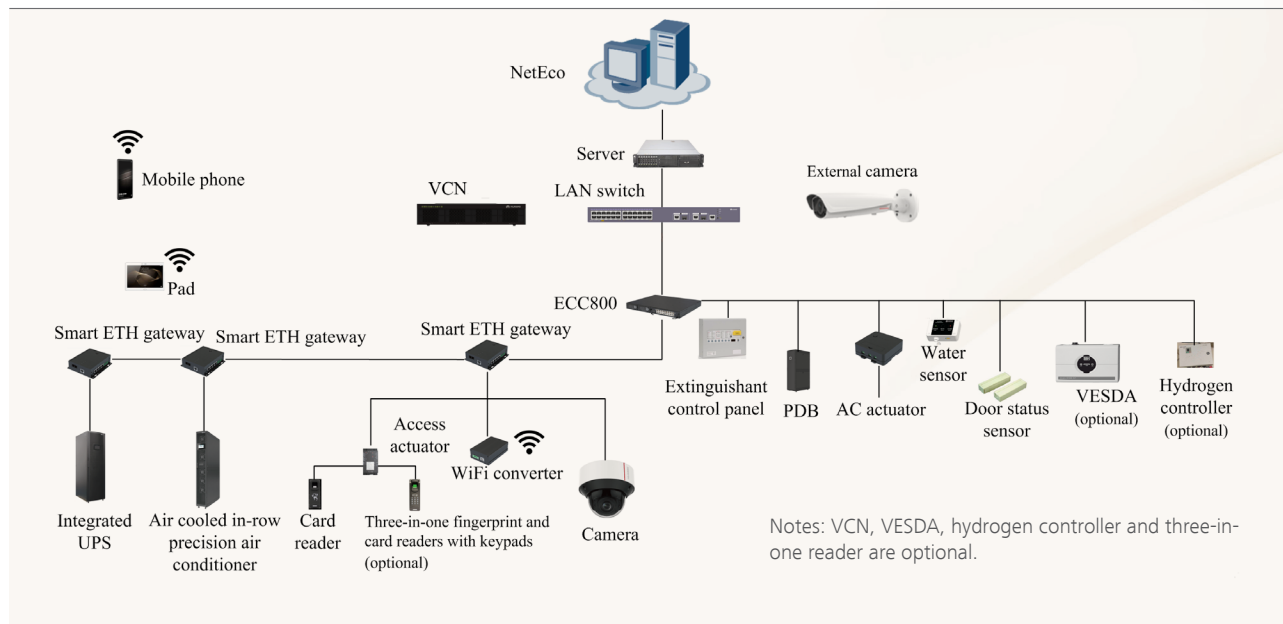
- ① Cooling outdoor units cabinet
- ② Cold aisle
- ③ IT cabinet
- ④ Battery



FusionModule1000A-40ft-IT-N+X

- ① Cooling outdoor units
- ② Cold aisle
- ③ IT cabinet
- ④ Hot aisle
- ⑤ Cooling indoor units
- ⑥ Battery cabinet
- ⑦ Integrated UPS
- ⑧ Entrance

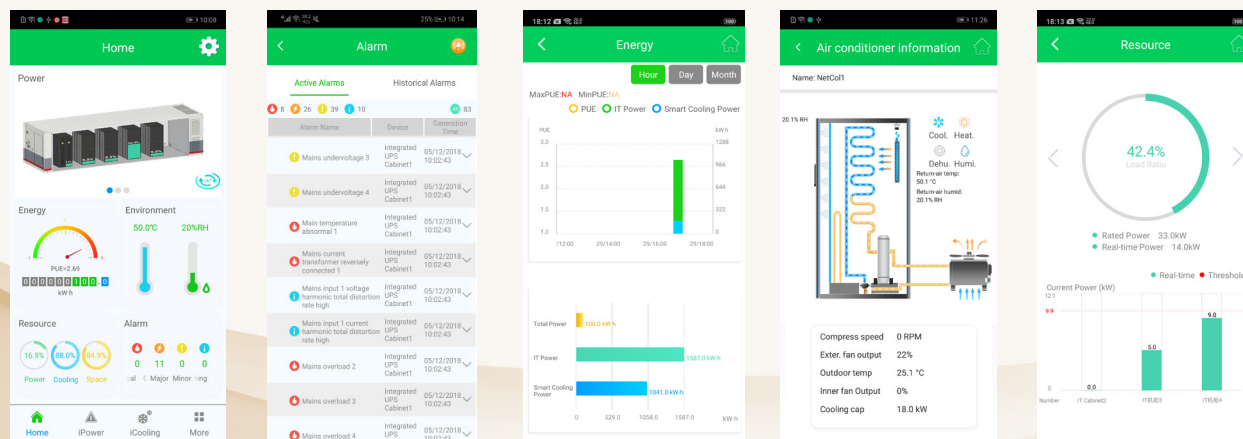
Management System



Local Display



Mobile Phone APP



Homepage

Real-time Alarm

Power

Cooling

Resource

Specifications

System	Sub-item	FusionModule1000A 40ft-IT-N+X-380V ^⑦	FusionModule1000A 40ft-IT-2N-380V ^⑦	System	Sub-item	FusionModule1000A 40ft-IT-N+X-380V ^⑦	FusionModule1000A 40ft-IT-2N-380V ^⑦
Power	Total IT load	≤ 54kW ^⑧		Fire protection	Auto fire protection system	Automatic fire detection & suppression system c/w emergency release function	
	Power density per rack	≤ 9kW			Alarm	Automatic monitoring and detection, support sound and light alarm	
	Input mode	3Ph+N+PE, 380V /400V/415V AC,50Hz/60Hz			Gas	Standard HFC-227ea	
	UPS model	Integrated modular UPS (with integrated ATS and 25kVA module)	Integrated modular UPS (with integrated MCCB and 25kVA module)	Monitoring	Module access	IC card reader as default optional three-in-one access control	
	UPS capacity	75kVA			Rack access	Customization ^⑥	
	Number of UPS power module	3+1 redundancy	3		Monitoring management	Real-time monitoring of temperature and humidity control, fire control, access control and cooling system	
	BAT backup time ^①	7.5min	10min		Local display	PAD	
	Basic rPDU	Standard			Remote O&M	App	
	Smart rPDU	Optional			E-mail	Optional	
	Surge protection ^②	Level-3, maximum 40kA 8/20us Level-2, maximum 60kA 8/20us		SNMP short message	Optional		
Rack	Rack capacity ^③	8 × 42U IT rack	7 × 42U IT rack	Management	DCIM	NetEco	
	Rack distribution	2 × 9kW/ Rack+6 × 6kW/ Rack	4 × 9kW/ rack+3 × 6kW/ rack		Server	Pre-installed	
	Size (H × W × D)	600*1100*2000 mm 600*1200*2000mm		Lan switch	Pre-installed		
Cooling	Technology	Air-cooled in-row		Enclosure	External size (H × W × D)mm	2896 × 2438 × 12192	
	Sensible cooling capacity	25kW/unit (3+1 redundancy)			Aisle width	cold aisle of 1150mm; hot aisle can be extended to 610mm;	
	Coolant	R410A		Protection	Dustproof and waterproof	IP55 (optional IP65)	
	Fan type	EC fan			Anti-seismic	GR-63-CORE Zone3 (Equivalent to Mercalli Intensity 9)	
	Compressor	DC variable-frequency			Anti-theft	EN 1627-EN 1630 Class 3(optional)	
	A/C group control	Support		Operating Environment	Operating humidity (RH)	5% ~ 95%	
	Temp. range	18~27°C			Operating temp. ^④	-20°C~+55°C	-40°C~+55°C
	Humidity range	20%~80%			Altitude ^⑤	≤ 4000m	
	Hot/cold aisle	Hot aisle containment					
	Humidification	Wet-film humidifier					

① ③: The BAT backup time and rack capacity vary in configuration. Details refer to the Product Overview.

②: Surge protection level vary in configuration. Details refer to the Product Overview.

④⑧: Low-temperature air-conditioner is required for -40°C to -20°C. When the temperature is over 45°C, the IT load will be derated as follows: when 45°C < T ≤ 50°C, the derating coefficient is 0.89; when 50°C < T ≤ 55°C, the derating coefficient is 0.58.

⑤: Power derating is required when the altitude is over 1000m. Details refer to the Product Overview

⑥: Customized access control will cause changes to U space and monitoring solution.

⑦ N+X and 2N refers to redundancy level of power system. N+X refers to UPS module redundancy. 2N refers to UPS unit redundancy.

Copyright © Huawei Technologies Co., Ltd. 2019. All rights reserved.

No part of this document may be reproduced or transmitted in any form or by any means without prior written consent of Huawei Technologies Co., Ltd.

General Disclaimer

The information in this document may contain predictive statements including, without limitation, statements regarding the future financial and operating results, future product portfolio, new technology, etc. There are a number of factors that could cause actual results and developments to differ materially from those expressed or implied in the predictive statements. Therefore, such information is provided for reference purpose only and constitutes neither an offer nor an acceptance. Huawei may change the information at any time without notice.

HUAWEI TECHNOLOGIES CO., LTD.

Huawei Industrial Base
Bantian Longgang
Shenzhen 518129, P.R. China
Tel: +86-755-28780808

www.huawei.com