

M2120-10-EBIn

1T 2MP Low-Light Invisible IR Bullet Camera

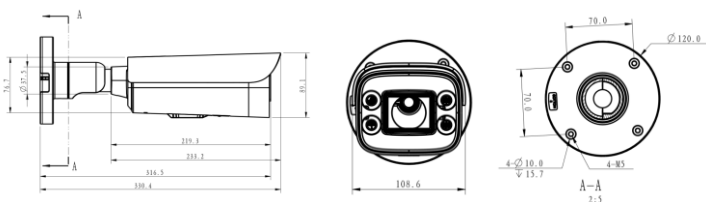


Features

- Computing Power 1 TOPS
- Support behavior analysis, exception detection, crowd flow analysis
- 1/2.7" progressive scan CMOS
- Area cropping, allowing users to view fine details at a limited bandwidth
- Stream smoothing, meeting various requirements for video quality and fluency
- Traffic shaping, enabling precise control over instantaneous burst of video streams and delivering smooth video without packet loss
- TCP acceleration, enabling the network to carry video streams of higher quality
- Embedded video quality diagnosis functions
- AES-based stream encryption

Dimensions

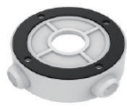
Unit: mm



Recommended Accessories



Pole-mount bracket
DTS-11C



Connection box
ACC2501-HW

Technical Specifications

Product Model	M2120-10-EBIn
Intelligent Function	
CPU	Hi3516D
Computing Power	1 TOPS
Behavior Analysis	Fast movement detection, tripwire crossing detection, intrusion detection, area entry/exit detection, and loitering detection
Exception detection	Audio existence detection, sudden volume increase or decrease detection, scene change detection, defocus detection and heat map (constraint scenario)
Crowd Flow Analysis	Head counting, crowd flow statistics, and queue length detection (constraint scenario)
Camera	
Image Sensor	1/2.7" 2-megapixel progressive scan CMOS
Memory	DDR3, 256MB*2
Flash	SPI NAND FLASH 256MB
Effective pixels	1920(H) x 1080(V)
Minimum Illumination	Color: 0.005 lux (F1.2, AGC ON, 1/30s shutter speed) B/W: 0.0025 lux (F1.2, AGC ON, 1/30s shutter speed) 0Lux (IR LED ON)
Day/Night mode	Automatic ICR, color, or B/W
Wide Dynamic Range (WDR)	140 dB
White Balance	Auto/Auto tracking/Manual
Highlight Compensation (HLC)	Supported
Image Defogging	Auto/Manual/Off
Digital Noise Reduction (DNR)	2D/3D noise reduction
Lens and Illuminator	
Focal Length	2.8-12mm
Maximum Aperture	F1.4 (W)-F2.6(T)
Iris type	Fixed iris
Maximum Radiation Distance	50m
Function	
Video Encoding Format	H.265/H.264/MJPEG
Maximum Resolution	1920 x 1080
Angle of view	Horizontal: 36°(T) to 100°(W); Vertical: 20°(T) to 52.5°(W)
Frame Rate	60/50/30/25 fps
Multi-Channel Encoding	Triple streams
Intelligent Encoding	Extra265/264
Camera Connection Protocol	GB/T 28181(2011, 2016)、Huawei SDK、Huawei Rest API、GAT 1400、DB3311
Network Protocol	TCP, UDP, IPv4, IPv6, DHCP, DHCPv6, DNS, ICMP, ICMPv6, IGMP, HTTPS, FTP, SFTP, RTP, RTSP, RTCP, SIP, ARP, SSL, NTP, SNMP(V1/V2/V3), 802.1x, QoS, DDNS, SMTP, PPPoE
Security Mode	User name and password authentication, 802.1X access authentication, and HTTPS digital certificate
Media Security	AES256-based SDK stream encryption
Alarm Linkage	Alarm source: Alarm source: motion detection/lens blocking/Boolean value input/intelligent analysis alarms Linkage action: Boolean value output/SD card-based video recording/SD card-based snapshot taking/Email sending/Pre-recording
Port	
Network Port	One RJ45 10M/100M adaptive Ethernet port
Communication serial port	One RS-485 port
Alarm port	2 alarm input ports and 1 alarm output port
Audio port	1 audio input port and 1 audio output port
Storage Port	MicroSD card slot that supports microSDHC/microSDXC; maximum memory card capacity: 256 GB
General Specifications	
Power Supply	12 V DC, PoE
Power Consumption	Maximum: 16W ; Typical: 5W
Operating Temperature	-30°C to +60°C
Operating Humidity	5% to 95% (non-condensing)
Surge Protection Rating	4 kV
Ingress Protection Rating	IP67, IK10
Weight	Net weight: 1.7kg ; Gross weight: 2.2kg
Dimensions (H x W x D)	Device: 89.1x108.6x330.4mm; Packing: 139x182x376mm