

# CloudEngine S5732-H Series Switches

CloudEngine S5732-H series switches are next-generation enhanced Ethernet switches, providing 24 or 48 optical port models which support 6 x 40GE uplink ports.



## Introduction

The CloudEngine S5732-H series switches are the next-generation enhanced Ethernet switches developed by Huawei. The CloudEngine S5732-H builds on Huawei's unified Versatile Routing Platform (VRP) and boasts various IDN features. For example, the integrated wireless AC capabilities can manage up to 1,024 wireless APs; the free mobility feature ensures consistent user experience; the VXLAN functionality implements network virtualization; and built-in security probes support abnormal traffic detection, threat analysis even in encrypted traffic, and network-wide threat deception. With these merits, the CloudEngine S5732-H can function as core switches for small-sized campus networks and branches of medium- and large-sized campus networks, and also work as access switches for Metropolitan Area Network.

## Product Overview

### Models and Appearances

The following models are available in the CloudEngine S5732-H series.


Models and Appearances	Description
 CloudEngine S5732-H24S6Q	<ul style="list-style-type: none"> <li>• 20 x GE SFP ports, 4 x 10GE SFP+ ports, 6 x 40GE QSFP+ ports</li> <li>• 1+1 power backup</li> <li>• Forwarding performance: 450 Mpps</li> <li>• Switching capacity: 600 Gbps/2.4 Tbps</li> </ul>
 CloudEngine S5732-H48S6Q	<ul style="list-style-type: none"> <li>• 44 x GE SFP ports, 4 x 10GE SFP+ ports, 6 x 40GE QSFP+ ports</li> <li>• 1+1 power backup</li> <li>• Forwarding performance: 486 Mpps</li> <li>• Switching capacity: 648 Gbps/2.4 Tbps</li> </ul>

### Fan Models

The following table lists the fan module applicable to the CloudEngine S5732-H.

Technical specifications of the fan module applicable to the CloudEngine S5732-H series



Fan Module	Technical Specifications	Applied Switch Model
------------	--------------------------	----------------------

Fan Module	Technical Specifications	Applied Switch Model
 <p>FAN-031A-B</p>	<ul style="list-style-type: none"> <li>• Dimensions (W x D x H): 40 mm x 100.3 mm x 40 mm</li> <li>• Number of fans: 1</li> <li>• Weight: 0.1 kg</li> <li>• Maximum power consumption: 21.6 W</li> <li>• Maximum fan speed: 24500±10% revolutions per minute (RPM)</li> <li>• Maximum wind rate: 31 cubic feet per minute (CFM)</li> <li>• Hot swap: Supported</li> </ul>	<ul style="list-style-type: none"> <li>• CloudEngine S5732-H24S6Q</li> <li>• CloudEngine S5732-H48S6Q</li> </ul>

## Power Supply

The following table lists the power supplies applicable to the CloudEngine S5732-H.

Technical specifications of the power supplies applicable to the CloudEngine S5732-H series

Power Module	Technical Specifications	Applied Switch Model
 <p>PAC600S12-CB</p>	<ul style="list-style-type: none"> <li>• Dimensions (H x W x D): 40 mm x 90 mm x 215 mm (1.6 in. x 3.5 in. x 8.5 in.)</li> <li>• Weight: 0.95 kg (2.09 lb)</li> <li>• Rated input voltage range: <ul style="list-style-type: none"> <li>– 100 V AC to 240 V AC, 50/60 Hz</li> <li>– 240 V DC</li> </ul> </li> <li>• Maximum input voltage range: <ul style="list-style-type: none"> <li>– 90 V AC to 290 V AC, 45 Hz to 65 Hz</li> <li>– 190 V DC to 290 V DC</li> </ul> </li> <li>• Maximum input current: <ul style="list-style-type: none"> <li>– 100 V AC to 240 V AC: 8 A</li> <li>– 240 V DC: 4 A</li> </ul> </li> <li>• Maximum output current: 50 A</li> <li>• Rated output voltage: 12 V</li> <li>• Maximum output power: 600 W</li> <li>• Hot swap: Supported</li> </ul>	<ul style="list-style-type: none"> <li>• CloudEngine S5732-H24S6Q</li> <li>• CloudEngine S5732-H48S6Q</li> </ul>
 <p>PDC1000S12-DB</p>	<ul style="list-style-type: none"> <li>• Dimensions (H x W x D): 40 mm x 90 mm x 215 mm (1.6 in. x 3.5 in. x 8.5 in.)</li> <li>• Weight: 1.02 kg (2.25 lb)</li> <li>• Rated input voltage range: -48 V DC to -60 V DC</li> <li>• Maximum input voltage range: -38.4 V DC to -72 V DC</li> <li>• Maximum input current: 30 A</li> <li>• Maximum output current: 83.3 A</li> <li>• Maximum output power: 1000 W</li> <li>• Hot swap: Supported</li> </ul>	<ul style="list-style-type: none"> <li>• CloudEngine S5732-H24S6Q</li> <li>• CloudEngine S5732-H48S6Q</li> </ul>

# Product Features and Highlights

## Enabling Networks to Be More Agile for Services

- CloudEngine S5732-H has a built-in high-speed and flexible processor chip. The chip's flexible packet processing and traffic control capabilities can meet current and future service requirements, helping build a highly scalable network.
- In addition to capabilities of traditional switches, the CloudEngine S5732-H provides open interfaces and supports user-defined forwarding behavior. Enterprises can use the open interfaces to develop new protocols and functions independently or jointly with equipment vendors to build campus networks meeting their own needs.
- CloudEngine S5732-H series switches, on which enterprises can define their own forwarding models, forwarding behavior, and lookup algorithms. Microcode programmability makes it possible to provide new services within six months, without the need of replacing the hardware. In contrast, traditional ASIC chips use a fixed forwarding architecture and follow a fixed forwarding process. For this reason, new services cannot be provisioned until new hardware is developed to support the services one to three years later.

## Delivering Abundant Services More Agilely

- This CloudEngine S5732-H provides the integrated WLAN AC function that can manage 1,024 APs, reducing the costs of purchasing additional WLAN AC hardware and breaking the forwarding performance bottleneck of an external WLAN AC. With this switch series, customers can stay ahead in the high-speed wireless era.
- With the unified user management function, the CloudEngine S5732-H authenticates both wired and wireless users, ensuring a consistent user experience no matter whether they are connected to the network through wired or wireless access devices. The unified user management function supports various authentication methods, including 802.1x, MAC address, and Portal authentication, and is capable of managing users based on user groups, domains, and time ranges. These functions visualize user and service management and boost the transformation from device-centric management to user-centric management.
- The CloudEngine S5732-H provides excellent quality of service (QoS) capabilities and supports queue scheduling and congestion control algorithms. Additionally, it adopts innovative priority queuing and multi-level scheduling mechanisms to implement fine-grained scheduling of data flows, meeting service quality requirements of different user terminals and services.

## Providing Fine Granular Network Management More Agilely

- The CloudEngine S5732-H uses the Packet Conservation Algorithm for Internet (iPCA) technology that changes the traditional method of using simulated traffic for fault location. iPCA technology can monitor network quality for any service flow anywhere and anytime, without extra costs. It can detect temporary service interruptions in a very short time and can identify faulty ports accurately. This cutting-edge fault detection technology turns "extensive management" to "fine granular management."
- The CloudEngine S5732-H supports Two-Way Active Measurement Protocol (TWAMP) to accurately check any IP link and obtain the entire network's IP performance. This protocol eliminates the need of using a dedicated probe or a proprietary protocol.
- The CloudEngine S5732-H supports SVF and functions as a parent switch. With this virtualization technology, a physical network with the "Small-sized core/aggregation switches + Access switches + APs" structure can be virtualized into a "super switch", greatly simplifying network management.
- With the Easy Deploy function, the CloudEngine S5732-H manages access switches in a similar way an AC manages APs. In deployment, access switches and APs can go online with zero-touch configuration. In the Easy Deploy solution, the Commander collects topology information about the connected clients and stores the clients' startup information based on the topology. Clients can be replaced with zero-touch configuration. The Commander can deliver configurations and scripts to clients in batches and query the delivery results. In addition, the Commander can collect and display information about power consumption on the entire network.

## Comprehensive VPN Technologies

- The CloudEngine S5732-H supports the MPLS function, and can be used as access devices of high-quality enterprise leased line.
- The CloudEngine S5732-H allows users in different VPNs to connect to the same switch and isolates users through multi-instance routing. Users in multiple VPNs connect to a provider edge (PE) device through the same physical port on the switch, which reduces the cost on VPN network deployment.

## Flexible Ethernet Networking

- In addition to traditional Spanning Tree Protocol (STP), Rapid Spanning Tree Protocol (RSTP), and Multiple Spanning Tree Protocol (MSTP), the CloudEngine S5732-H supports Huawei-developed Smart Ethernet Protection (SEP) technology and the latest Ethernet Ring Protection Switching (ERPS) standard. SEP is a ring protection protocol specific to the Ethernet link layer, and applies to various ring network topologies, such as open ring topology, closed ring topology, and cascading ring topology. This protocol is reliable, easy to maintain, and implements fast protection switching within 50 ms. ERPS is defined in ITU-T G.8032. It implements millisecond-level protection switching based on traditional Ethernet MAC and bridging functions.
- The CloudEngine S5732-H supports Smart Link and Virtual Router Redundancy Protocol (VRRP), which implement backup of uplinks. One CloudEngine S5732-H switch can connect to multiple aggregation switches through multiple links, significantly improving reliability of access devices.

## Various Security Control Methods

- The CloudEngine S5732-H supports 802.1x authentication, MAC address authentication, Portal authentication, and hybrid authentication, and can dynamically deliver user policies such as VLANs, QoS policies, and access control lists (ACL). It also supports user management based on user groups.
- The CloudEngine S5732-H provides a series of mechanisms to defend against DoS and user-targeted attacks. DoS attacks are targeted at switches and include SYN flood, Land, Smurf, and ICMP flood attacks. User-targeted attacks include bogus DHCP server attacks, IP/MAC address spoofing, DHCP request flood, and change of the DHCP CHADDR value.
- The CloudEngine S5732-H sets up and maintains a DHCP snooping binding table, and discards the packets that do not match the table entries. You can specify DHCP snooping trusted and untrusted ports to ensure that users connect only to the authorized DHCP server.
- The CloudEngine S5732-H supports strict ARP learning, which prevents ARP spoofing attackers from exhausting ARP entries.

## Mature IPv6 Features

- The CloudEngine S5732-H is developed based on the mature, stable VRP and supports IPv4/IPv6 dual stacks, IPv6 routing protocols (RIPng, OSPFv3, BGP4+, and IS-IS for IPv6). With these IPv6 features, the CloudEngine S5732-H can be deployed on a pure IPv4 network, a pure IPv6 network, or a shared IPv4/IPv6 network, helping achieve IPv4-to-IPv6 transition.

## Intelligent Stack (iStack)

- The CloudEngine S5732-H supports the iStack function that combines multiple switches into a logical switch. Member switches in a stack implement redundancy backup to improve device reliability and use inter-device link aggregation to improve link reliability. iStack provides high network scalability. You can increase a stack's ports, bandwidth, and processing capacity by simply adding member switches. iStack also simplifies device configuration and management. After a stack is set up, up to nine physical switches can be virtualized into one logical device. You can log in to any member switch in the stack to manage all the member switches in the stack.

## VXLAN Features

- VXLAN is used to construct a Unified Virtual Fabric (UVF). As such, multiple service networks or tenant networks can be deployed on the same physical network, and service and tenant networks are isolated from each other. This capability truly achieves 'one network for multiple purposes'. The resulting benefits include enabling data transmission of different services or customers, reducing the network construction costs, and improving network resource utilization.
- The CloudEngine S5732-H series switches are VXLAN-capable and allow centralized and distributed VXLAN gateway deployment modes. These switches also support the BGP EVPN protocol for dynamically establishing VXLAN tunnels and can be configured using NETCONF/YANG.

## Big Data Security Collaboration

- The CloudEngine S5732-H switches use NetStream to collect campus network data and then report such data to the Huawei Cybersecurity Intelligence System (CIS). The purposes of doing so are to detect network security threats, display the security posture across the entire network, and enable automated or manual response to security threats. The CIS delivers the security policies to the Agile Controller. The Agile Controller then delivers such policies to switches that will handle security events accordingly. All these ensure campus network security.
- The CloudEngine S5732-H supports Encrypted Communication Analytics (ECA). It uses built-in ECA probes to extract characteristics of encrypted streams based on NetStream sampling and Service Awareness (SA), generates metadata, and reports the metadata to Huawei Cybersecurity Intelligence System (CIS). The CIS uses the AI algorithm to train the traffic model

and compare characteristics of extracted encrypted traffic to identify malicious traffic. The CIS displays detection results on the GUI, provides threat handling suggestions, and automatically isolates threats with the Agile Controller to ensure campus network security.

- The CloudEngine S5732-H supports deception. It functions as a sensor to detect threats such as IP address scanning and port scanning on a network and lures threat traffic to the honeypot for further checks. The honeypot performs in-depth interaction with the initiator of the threat traffic, records various application-layer attack methods of the initiator, and reports security logs to the CIS. The CIS analyzes security logs. If the CIS determines that the suspicious traffic is an attack, it generates an alarm and provides handling suggestions. After the administrator confirms the alarm, the CIS delivers a policy to the Agile Controller. The Agile Controller delivers the policy to the switch for security event processing, ensuring campus network security.

## Open Programmability System (OPS)

- Open Programmability System (OPS) is an open programmable system based on the Python language. IT administrators can program the O&M functions of a switch through Python scripts to quickly innovate functions and implement intelligent O&M.

## Intelligent Upgrade

- Switches support the intelligent upgrade feature. Specifically, switches obtain the version upgrade path and download the newest version for upgrade from the Huawei Online Upgrade Platform (HOUP). The entire upgrade process is highly automated and achieves one-click upgrade. In addition, preloading the version is supported, which greatly shortens the upgrade time and service interruption time.
- The intelligent upgrade feature greatly simplifies device upgrade operations and makes it possible for the customer to upgrade the version independently. This greatly reduces the customer's maintenance costs. In addition, the upgrade policies on the HOUP platform standardize the upgrade operations, which greatly reduces the risk of upgrade failures.

## Intelligent O&M

- The CloudEngine S5732-H provides telemetry technology to collect device data in real time and send the data to Huawei campus network analyzer CampusInsight. The CampusInsight analyzes network data based on the intelligent fault identification algorithm, accurately displays the real-time network status, effectively demarcates and locates faults in a timely manner, and identifies network problems that affect user experience, accurately guaranteeing user experience.
- The CloudEngine S5732-H supports a variety of intelligent O&M features for audio and video services, including the enhanced Media Delivery Index (eMDI). With this eMDI function, the switch can function as a monitored node to periodically conduct statistics and report audio and video service indicators to the CampusInsight platform. In this way, the CampusInsight platform can quickly demarcate audio and video service quality faults based on the results of multiple monitored nodes.

# Licensing

CloudEngine S5732-H supports both the traditional feature-based licensing mode and the latest Huawei IDN One Software (N1 mode for short) licensing mode. The N1 mode is ideal for campus network deployments in enterprise private cloud mode, and greatly enhances the customer experiences in purchasing and upgrading software services with simplicity.

### Software Package Features in N1 Mode

Switch Functions	N1 Basic Software	N1 Foundation Software Package	N1 Advanced Software Package
<b>Basic network functions:</b> Layer 2 functions, IPv4, IPv6, MPLS, SVF, and others	√	√	√
<b>Basic network automation based on the Agile Controller:</b> <ul style="list-style-type: none"> <li>● Basic automation: Plug-and-play, SSID, and AP group management</li> <li>● Basic monitoring: Application visualization</li> <li>● NE management: Image and topology</li> </ul>	×	√	√

Switch Functions	N1 Basic Software	N1 Foundation Software Package	N1 Advanced Software Package
management and discovery <ul style="list-style-type: none"> <li>WLAN enhancement: Roaming and optimization for up to 128 APs</li> </ul>			
<b>Advanced network automation and intelligent O&amp;M:</b> VXLAN, user access authentication, free mobility, and CampusInsight basic functions	x	x	√

Note: Only V200R019C00 and later versions can support N1 mode

## Product Specifications

### Functions and Features

The following table lists the functions and features available on the CloudEngine S5732-H.

Function and feature metrics for the CloudEngine S5732-H series

Function and Feature		Description	CloudEngine S5732-H
Ethernet features	Ethernet basics	Full-duplex, half-duplex, and auto-negotiation	Yes
		Rate auto-negotiation on an interface	Yes
		Flow control on an interface	Yes
		Jumbo frames	Yes
		Link aggregation	Yes
		Load balancing among links of a trunk	Yes
		Transparent transmission of Layer 2 protocol packets	Yes
		Device Link Detection Protocol (DLDP)	Yes
		Link Layer Discovery Protocol (LLDP)	Yes
		Link Layer Discovery Protocol-Media Endpoint Discovery (LLDP-MED)	Yes
		Interface isolation	Yes
		Broadcast traffic suppression on an interface	Yes
		Multicast traffic suppression on an interface	Yes
		Unknown unicast traffic suppression on an interface	Yes
		VLAN broadcast traffic suppression	Yes
VLAN multicast traffic suppression	Yes		
VLAN unknown unicast traffic suppression	Yes		

Function and Feature		Description	CloudEngine S5732-H
	VLAN	VLAN specification	4094
		VLANIF interface specification	1024
		Access mode	Yes
		Trunk mode	Yes
		Hybrid mode	Yes
		QinQ mode	Yes
		Default VLAN	Yes
		VLAN assignment based on interfaces	Yes
		VLAN assignment based on protocols	Yes
		VLAN assignment based on IP subnets	Yes
		VLAN assignment based on MAC addresses	Yes
		VLAN assignment based on MAC address + IP address	Yes
		VLAN assignment based on MAC address + IP address + interface number	Yes
		Adding double VLAN tags to packets based on interfaces	Yes
		Super-VLAN	Yes
		Super-VLAN specification	256
		Sub-VLAN	Yes
		Sub-VLAN specification	1K
		VLAN mapping	Yes
		Selective QinQ	Yes
	MUX VLAN	Yes	
	Voice VLAN	Yes	
	Guest VLAN	Yes	
	GVRP	GARP	Yes
		GVRP	Yes
	VCMP	VCMP	Yes
	MAC	MAC address	128K
Automatic learning of MAC addresses		Yes	
Automatic aging of MAC addresses		Yes	
Static, dynamic, and blackhole MAC address entries		Yes	
Interface-based MAC address learning limiting		Yes	

Function and Feature	Description	CloudEngine S5732-H	
	Sticky MAC	Yes	
	MAC address flapping detection	Yes	
	Configuring MAC address learning priorities for interfaces	Yes	
	MAC address spoofing defense	Yes	
	Port bridge	Yes	
	ARP	Static ARP	Yes
		Dynamic ARP	Yes
		ARP entry	140K
		ARP aging detection	Yes
		Intra-VLAN proxy ARP	Yes
		Inter-VLAN proxy ARP	Yes
		Routed proxy ARP	Yes
		Multi-egress-interface ARP	Yes
Ethernet loop protection	MSTP	STP	Yes
		RSTP	Yes
		MSTP	Yes
		VBST	Yes
		BPDU protection	Yes
		Root protection	Yes
		Loop protection	Yes
		Defense against TC BPDU attacks	Yes
	Loopback detection	Loop detection on an interface	Yes
	SEP	SEP	Yes
	Smart Link	Smart Link	Yes
		Smart Link multi-instance	Yes
		Monitor Link	Yes
	RRPP	RRPP	Yes
		Single RRPP ring	Yes
		Tangent RRPP ring	Yes
		Intersecting RRPP ring	Yes
		Hybrid networking of RRPP rings and other ring networks	Yes
	ERPS	G.8032 v1	Yes
		G.8032 v2	Yes



Function and Feature		Description	CloudEngine S5732-H	
IPv4/IPv6 forwarding		ERPS semi-ring topology	Yes	
		ERPS closed-ring topology	Yes	
	IPv4 and unicast routing	IPv4 static routing	Yes	
		VRF	Yes	
		DHCP client	Yes	
		DHCP server	Yes	
		DHCP relay	Yes	
		DHCP policy VLAN	Yes	
		URPF check	Yes	
		Routing policies	Yes	
		IPv4 routes	192K	
		RIPv1	Yes	
		RIPv2	Yes	
		OSPF	Yes	
		BGP	Yes	
		MBGP	Yes	
		IS-IS	Yes	
		Policy-based routing (PBR)	Yes	
		Multicast routing features	IGMPv1/v2/v3	Yes
			PIM-DM	Yes
			PIM-SM	Yes
			MSDP	Yes
	IPv4 multicast routes		64K	
	IPv6 multicast routes		4K	
	Multicast routing policies		Yes	
	RPF		Yes	
	IPv6 features	IPv6 protocol stack	Yes	
		ND	Yes	
		ND entry	80K	
		ND snooping	Yes	
		DHCPv6 snooping	Yes	
RIPng		Yes		
DHCPv6 server		Yes		
DHCPv6 relay		Yes		

Function and Feature	Description	CloudEngine S5732-H	
	OSPFv3	Yes	
	BGP4+	Yes	
	IS-IS for IPv6	Yes	
	IPv6 routes	80K	
	VRRP6	Yes	
	MLDv1/v2	Yes	
	PIM-DM for IPv6	Yes	
	PIM-SM for IPv6	Yes	
	IPv6 transition technology	IPv6 manual tunneling	Yes
Layer 2 multicast features	-	IGMPv1/v2/v3 snooping	Yes
	-	IGMP snooping proxy	Yes
	-	MLD snooping	Yes
	-	Multicast traffic suppression	Yes
	-	Inter-VLAN multicast replication	Yes
MPLS & VPN	MPLS basic functions	LDP protocol	Yes
		Double MPLS labels	Yes
		Mapping from 802.1p priorities to EXP priorities in MPLS packets	Yes
		Mapping from DSCP priorities to EXP priorities in MPLS packets	Yes
	MPLS TE	MPLS-TE tunnel establishment	Yes
		MPLS-TE tunnel specification	256
		MPLS-TE protection group	Yes
	VPN	MCE	Yes
		GRE tunneling	Yes
		GRE tunnel specification	512
		VLL	Yes
		PWE3	Yes
		VPLS	Yes
		MPLS L3VPN	Yes
IPSec Efficient VPN		Yes	
Device reliability	BFD	Single-hop BFD	Yes
		BFD for static routes	Yes
		BFD for OSPF	Yes
		BFD for IS-IS	Yes

Function and Feature		Description	CloudEngine S5732-H
		BFD for BGP	Yes
		BFD for PIM	Yes
		BFD for VRRP	Yes
	Stacking	Service interface-based stacking	Yes
		Maximum number of stacked devices	9
	VRRP	VRRP standard protocol	Yes
	Ethernet OAM	EFM (802.3ah)	Automatic discovery of links
Link fault detection			Yes
Link troubleshooting			Yes
Remote loopback			Yes
CFM (802.1ag)		Software-level CCM	Yes
		802.1ag MAC ping	Yes
		802.1ag MAC trace	Yes
OAM association		Association between 802.1ag and 802.3ah	Yes
Y.1731		Unidirectional delay and jitter measurement	Yes
		Bidirectional delay and jitter measurement	Yes
QoS features	Traffic classification	Traffic classification based on ACLs	Yes
		Matching the simple domains of packets	Yes
	Traffic behavior	Traffic filtering	Yes
		Traffic policing (CAR)	Yes
		Modifying the packet priorities	Yes
		Modifying the simple domains of packets	Yes
		Modifying the packet VLANs	Yes
	Traffic shaping	Traffic shaping on an egress interface	Yes
		Traffic shaping on queues on an interface	Yes
	Congestion avoidance	Weighted Random Early Detection (WRED) on queues	Yes
		Tail drop	Yes
	Congestion management	Priority Queuing (PQ)	Yes
		Weighted Deficit Round Robin (WDRR)	Yes
		PQ+WDRR	Yes
		Weighted Round Robin (WRR)	Yes
		PQ+WRR	Yes
	ACL	Packet filtering at Layer 2 to Layer 4	Basic IPv4 ACL
Advanced IPv4 ACL			Yes

Function and Feature		Description	CloudEngine S5732-H	
		Basic IPv6 ACL	Yes	
		Advanced IPv6 ACL	Yes	
		Layer 2 ACL	Yes	
		User group ACL	Yes	
		User-defined ACL	Yes	
Configuration and maintenance	Login and configuration management	Command line interface (CLI)-based configuration	Yes	
		Console terminal service	Yes	
		Telnet terminal service	Yes	
		SSH v1.5	Yes	
		SSH v2.0	Yes	
		SNMP-based NMS for unified configuration	Yes	
		Web page-based configuration and management	Yes	
		EasyDeploy (client)	Yes	
		EasyDeploy (commander)	Yes	
		SVF	Yes	
		Cloud management	Yes	
		OPS	Yes	
		File system	Directory and file management	Directory and file management
	File upload and download			Yes
	Monitoring and maintenance	Deception	Deception	Yes
			ECA	Yes
			eMDI	Yes
			Hardware monitoring	Yes
			Log information output	Yes
			Alarm information output	Yes
			Debugging information output	Yes
			Port mirroring	Yes
			Flow mirroring	Yes
			Remote mirroring	Yes
			Energy saving	Yes
	Version upgrade	Version upgrade	Version upgrade	Yes
			Version rollback	Yes
Security	ARP security	ARP packet rate limiting	Yes	

Function and Feature	Description	CloudEngine S5732-H	
	ARP anti-spoofing	Yes	
	Association between ARP and STP	Yes	
	ARP gateway anti-collision	Yes	
	Dynamic ARP Inspection (DAI)	Yes	
	Static ARP Inspection (SAI)	Yes	
	Egress ARP Inspection (EAI)	Yes	
	IP security	ICMP attack defense	Yes
		IPSG for IPv4	Yes
		IPSG user capacity	3000
		IPSG for IPv6	Yes
		IPSGv6 user capacity	1500
	Local attack defense	CPU attack defense	Yes
	MFF	MFF	Yes
	DHCP snooping	DHCP snooping	Yes
		Option 82 function	Yes
		Dynamic rate limiting for DHCP packets	Yes
	Attack defense	Defense against malformed packet attacks	Yes
		Defense against UDP flood attacks	Yes
		Defense against TCP SYN flood attacks	Yes
		Defense against ICMP flood attacks	Yes
		Defense against packet fragment attacks	Yes
		Local URPF	Yes
	User access and authentication	AAA	Local authentication
Local authorization			Yes
RADIUS authentication			Yes
RADIUS authorization			Yes
RADIUS accounting			Yes
HWTACACS authentication			Yes
HWTACACS authorization			Yes
HWTACACS accounting			Yes
NAC		802.1X authentication	Yes
		MAC address authentication	Yes
		Portal authentication	Yes
		Hybrid authentication	Yes

Function and Feature		Description	CloudEngine S5732-H
	Policy association	Functioning as the control device	Yes
Network management	-	Ping	Yes
		Tracert	Yes
		NQA	Yes
		NTP	Yes
		iPCA	Yes
		Smart Application Control (SAC)	Yes
		NetStream	Yes
		SNMP v1	Yes
		SNMP v2c	Yes
		SNMP v3	Yes
		HTTP	Yes
		HTTPS	Yes
		RMON	Yes
		RMON2	Yes
		NETCONF/YANG	Yes
WLAN	-	AP management	Yes
		Number of managed APs	1,024
		Radio management	Yes
		WLAN service management	Yes
		WLAN QoS	Yes
		WLAN security	Yes
		WLAN user management	Yes
VXLAN	-	VXLAN Layer 2 gateway	Yes
		VXLAN Layer 3 gateway	Yes
		Centralized gateway	Yes
		Distributed gateway	Yes
		BGP-EVPN	Yes
		BGP-EVPN neighbor capacity	256
Interoperability	-	VLAN-based Spanning Tree (VBST)	Yes
		Link-type Negotiation Protocol (LNP)	Yes
		VLAN Central Management Protocol (VCMP)	Yes

#### NOTE

This content is applicable only to regions outside mainland China. Huawei reserves the right to interpret this content.

## Hardware Specifications

The following table lists the hardware specifications of the CloudEngine S5732-H.

### Hardware specifications of CloudEngine S5732-H models

Item		CloudEngine S5732-H24S6Q	CloudEngine S5732-H48S6Q
Physical specifications	Dimensions (W x D x H, mm)	442 x 420 x 43.6	442 x 420 x 43.6
	Chassis height	1 U	1 U
	Chassis weight (including packaging)	8.9 kg	9.2 kg
Fixed port	GE SFP port	20	44
	10GE SFP+ port	4	4
	40GE QSFP+ port	6	6
Management port	ETH port	Supported	Supported
	Console port (RJ45)	Supported	Supported
	USB port	USB 2.0	USB 2.0
CPU	Frequency	1.4 GHz	1.4 GHz
	Cores	4	4
Storage	Memory (RAM)	4 GB	4 GB
	Flash memory	2 GB	2 GB
Power supply system	Power supply type	<ul style="list-style-type: none"> <li>600 W AC (pluggable)</li> <li>1000 W DC (pluggable)</li> </ul>	<ul style="list-style-type: none"> <li>600 W AC (pluggable)</li> <li>1000 W DC (pluggable)</li> </ul>
	Power supply specification	For details about power supplies, see the section <a href="#">Power Supply</a> .	For details about power supplies, see the section <a href="#">Power Supply</a> .
	Rated voltage range	<ul style="list-style-type: none"> <li>AC input (600 W AC): 100 V AC to 240 V AC, 50/60 Hz</li> <li>DC input (1000 W DC): -48 VDC to -60 V DC</li> </ul>	<ul style="list-style-type: none"> <li>AC input (600 W AC): 100 V AC to 240 V AC, 50/60 Hz</li> <li>DC input (1000 W DC): -48 VDC to -60 V DC</li> </ul>
	Maximum voltage range	<ul style="list-style-type: none"> <li>AC input (600 W AC): 90 V AC to 290 V AC, 45 Hz to 65 Hz</li> <li>High-voltage DC input (600 W AC): 190 V DC to 290 V DC (meeting 240 V high-voltage DC certification)</li> <li>DC input (1000 W DC): -36 V DC to -72V DC</li> </ul>	<ul style="list-style-type: none"> <li>AC input (600 W AC): 90 V AC to 290 V AC, 45 Hz to 65 Hz</li> <li>High-voltage DC input (600 W AC): 190 V DC to 290 V DC (meeting 240 V high-voltage DC certification)</li> <li>DC input (1000 W DC): -36 V DC to -72V DC</li> </ul>
	Maximum power consumption	229 W	255 W
	Power consumption in the case of 30% traffic load <sup>1</sup>	126 W	142 W
	Power consumption in the case of 100% traffic load <sup>1</sup>	138 W	153 W

Item		CloudEngine S5732-H24S6Q	CloudEngine S5732-H48S6Q
	Minimum power consumption	88 W	90W
Heat dissipation system	Heat dissipation mode	Air-cooled heat dissipation and intelligent fan speed adjustment	Air-cooled heat dissipation and intelligent fan speed adjustment
	Number of fan modules	4	4
	Airflow	Air flows in from the front side and exhausts from the rear panel.	Air flows in from the front side and exhausts from the rear panel.
Environment parameters	Long-term operating temperature	<ul style="list-style-type: none"> <li>0-1800 m: -5°C to 45°C</li> <li>1800-5000 m: The operating temperature decreases 1°C every time the altitude increases 220 m.</li> </ul>	<ul style="list-style-type: none"> <li>0-1800 m: -5°C to 45°C</li> <li>1800-5000 m: The operating temperature decreases 1°C every time the altitude increases 220 m.</li> </ul>
	Storage temperature	-40°C to +70°C	-40°C to +70°C
	Relative humidity	5%–95% (non-condensing)	5%–95% (non-condensing)
	Operating altitude	5000 m	5000 m
	Noise under normal temperature (sound power)	65 dB (A)	65 dB (A)
	Noise under high temperature (sound power)	88 dB (A)	88 dB (A)
	Noise under normal temperature (sound pressure)	52 dB (A)	52 dB (A)
	Surge protection specification (power port)	<ul style="list-style-type: none"> <li>AC power port: ±6 kV in differential mode, ±6 kV in common mode</li> <li>DC power port: ±2 kV in differential mode, ±4 kV in common mode</li> </ul>	<ul style="list-style-type: none"> <li>AC power port: ±6 kV in differential mode, ±6 kV in common mode</li> <li>DC power port: ±2 kV in differential mode, ±4 kV in common mode</li> </ul>
Reliability	MTBF (year) <sup>2</sup>	62.27	56.87
	MTTR (hour)	2	2
	Availability	> 0.99999	> 0.99999
Certification		<ul style="list-style-type: none"> <li>EMC certification</li> <li>Safety certification</li> <li>Manufacturing certification</li> </ul> <p>For details about certifications, see the section <a href="#">Safety and Regulatory Compliance</a>.</p>	<ul style="list-style-type: none"> <li>EMC certification</li> <li>Safety certification</li> <li>Manufacturing certification</li> </ul> <p>For details about certifications, see the section <a href="#">Safety and Regulatory Compliance</a>.</p>

## NOTE

1: The power consumption under different load conditions is calculated according to the ATIS standard. Additionally, the EEE function is enabled and there is no PoE power output.

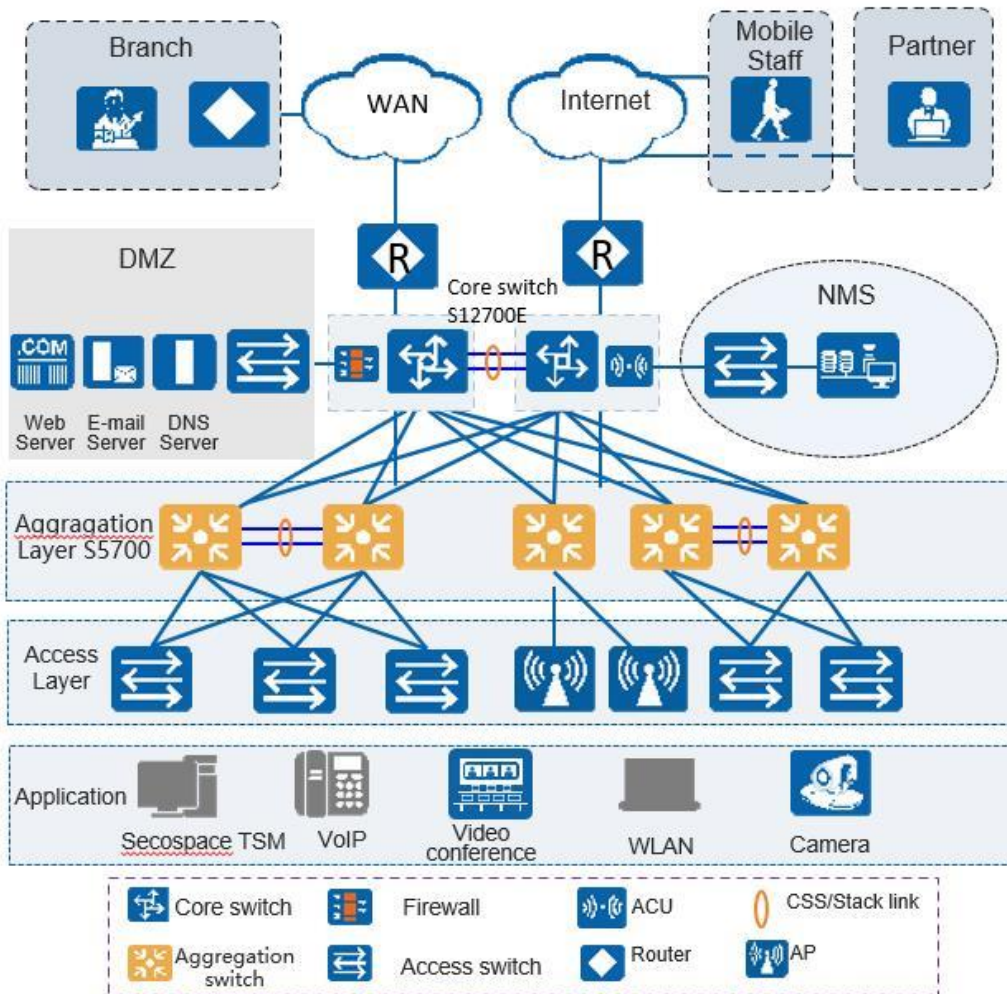
2: The reliability parameter values are calculated based on the typical configuration of the device. The parameter values vary according to the modules configured by the customer.



# Networking and Applications

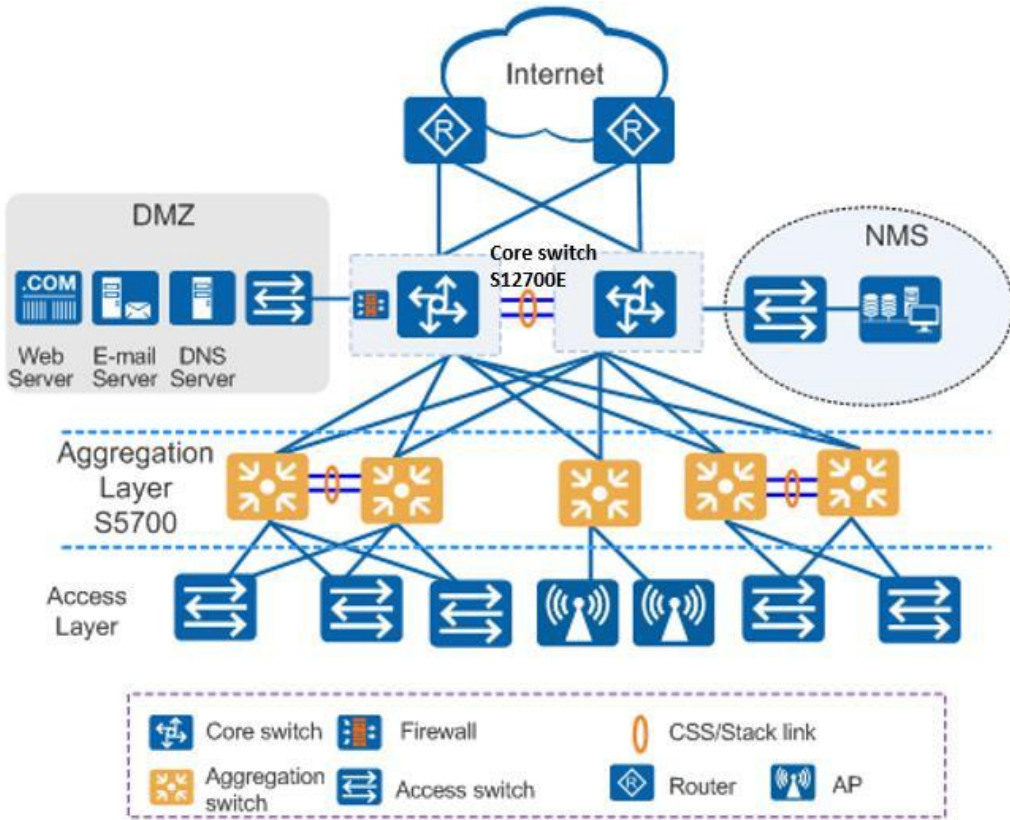
## Large-Scale Enterprise Campus Network

CloudEngine S5732-H series switches can be deployed at the access layer of a campus network to build a high-performance and highly reliable enterprise network.



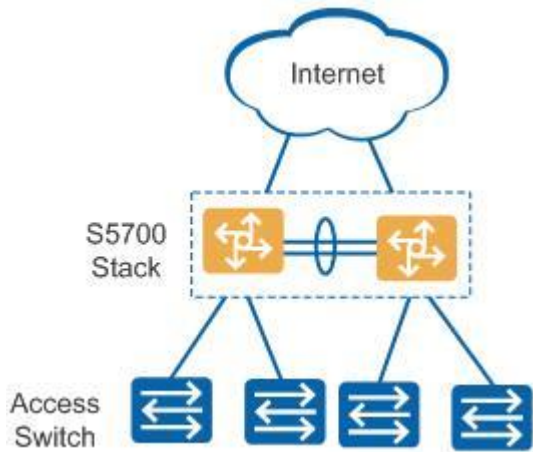
## Small- or Medium-scale Enterprise Campus Network

CloudEngine S5732-H series switches can be deployed at the aggregation layer of a campus network to build a high-performance, multi-service, and highly reliable enterprise network.



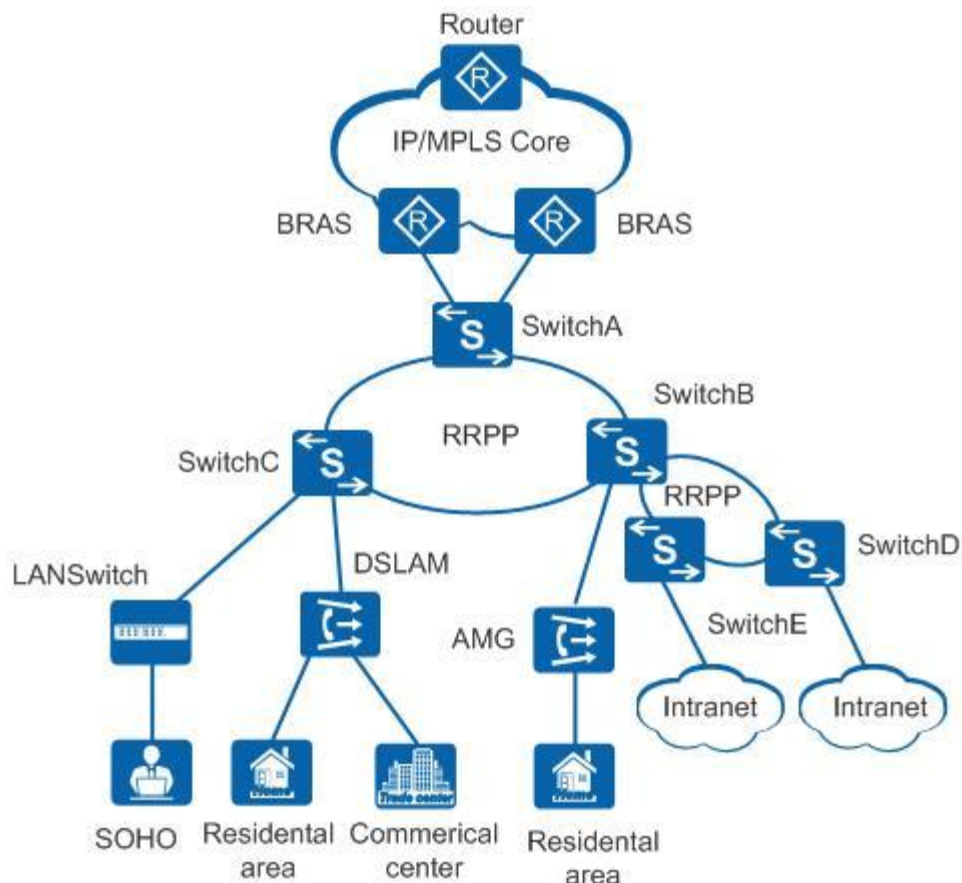
### Small-scale Enterprise Campus Network

With powerful aggregation and routing capabilities of CloudEngine S5732-H series switches make them suitable for use as core switches in a small-scale enterprise network. Two or more S5732-H switches use iStack technology to ensure high reliability. They provide a variety of access control policies to achieve centralized management and simplify configuration.



### Application on a MAN

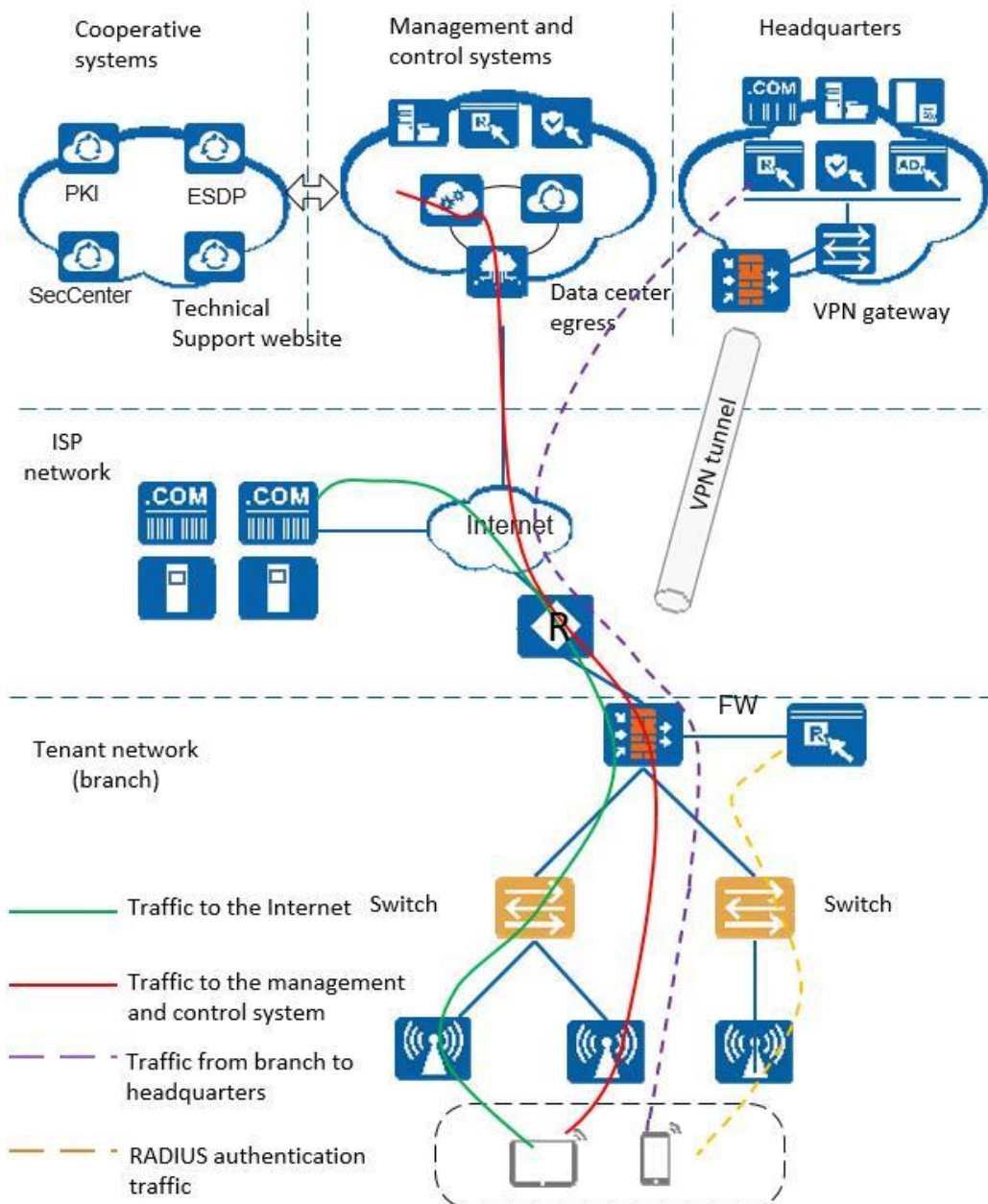
CloudEngine S5732-H series switches can be deployed at the access layer of a MAN(Metropolitan Area Network) to build a high-performance, multi-service, and highly reliable ISP MAN network.



## Application in Public Cloud

CloudCampus Solution is a network solution suite based on Huawei public cloud. CloudEngine S5732-H series switches can be located at the access layer.

The switches are plug-and-play. They go online automatically after being powered on and connected with network cables, without the need for complex configurations. The switches can connect to the management and control system (CloudCampus@AC-Campus for switches running V200R019C00 and earlier versions; iMaster NCE-Campus for switches running V200R019C10 and later versions), and use bidirectional certificate authentication to ensure management channel security. The switches provide the NETCONF and YANG interfaces, through which the management and control system delivers configurations to them. In addition, remote maintenance and fault diagnosis can be performed on the management and control system.



## Safety and Regulatory Compliance

The following table lists the safety and regulatory compliance of the CloudEngine S5732-H.

Safety and regulatory compliance of the CloudEngine S5732-H series

Certification Category	Description
Safety	<ul style="list-style-type: none"> <li>• IEC 60950-1</li> <li>• EN 60950-1/A11/A12</li> <li>• UL 60950-1</li> <li>• CSA C22.2 No 60950-1</li> <li>• AS/NZS 60950.1</li> <li>• CNS 14336-1</li> <li>• IEC60825-1</li> <li>• IEC60825-2</li> </ul>

Certification Category	Description
	<ul style="list-style-type: none"> <li>EN60825-1</li> <li>EN60825-2</li> </ul>
Electromagnetic Compatibility (EMC)	<ul style="list-style-type: none"> <li>CISPR22 Class A</li> <li>CISPR24</li> <li>EN55022 Class A</li> <li>EN55024</li> <li>ETSI EN 300 386 Class A</li> <li>CFR 47 FCC Part 15 Class A</li> <li>ICES 003 Class A</li> <li>AS/NZS CISPR22 Class A</li> <li>VCCI Class A</li> <li>IEC61000-4-2</li> <li>ITU-T K 20</li> <li>ITU-T K 21</li> <li>ITU-T K 44</li> <li>CNS13438</li> </ul>
Environment	<ul style="list-style-type: none"> <li>RoHS</li> <li>REACH</li> <li>WEEE</li> </ul>

#### NOTE

- EMC: electromagnetic compatibility
- CISPR: International Special Committee on Radio Interference
- EN: European Standard
- ETSI: European Telecommunications Standards Institute
- CFR: Code of Federal Regulations
- FCC: Federal Communication Commission
- IEC: International Electrotechnical Commission
- AS/NZS: Australian/New Zealand Standard
- VCCI: Voluntary Control Council for Interference
- UL: Underwriters Laboratories
- CSA: Canadian Standards Association
- IEEE: Institute of Electrical and Electronics Engineers
- RoHS: restriction of the use of certain hazardous substances
- REACH: Registration Evaluation Authorization and Restriction of Chemicals
- WEEE: Waste Electrical and Electronic Equipment

## MIB and Standards Compliance

### Supported MIBs

The following table lists the MIBs supported by the CloudEngine S5732-H.

MIBs supported by the CloudEngine S5732-H series

Category	MIB
Public MIB	<ul style="list-style-type: none"> <li>BRIDGE-MIB</li> </ul>

Category	MIB
	<ul style="list-style-type: none"> <li>• DISMAN-NSLOOKUP-MIB</li> <li>• DISMAN-PING-MIB</li> <li>• DISMAN-TRACEROUTE-MIB</li> <li>• ENTITY-MIB</li> <li>• EtherLike-MIB</li> <li>• IF-MIB</li> <li>• IP-FORWARD-MIB</li> <li>• IPv6-MIB</li> <li>• LAG-MIB</li> <li>• LLDP-EXT-DOT1-MIB</li> <li>• LLDP-EXT-DOT3-MIB</li> <li>• LLDP-MIB</li> <li>• MPLS-FTN-STD-MIB</li> <li>• MPLS-L3VPN-STD-MIB</li> <li>• MPLS-LDP-GENERIC-STD-MIB</li> <li>• MPLS-LDP-STD-MIB</li> <li>• MPLS-LSR-STD-MIB</li> <li>• MPLS-TE-STD-MIB</li> <li>• NOTIFICATION-LOG-MIB</li> <li>• NQA-MIB</li> <li>• OSPF-TRAP-MIB</li> <li>• P-BRIDGE-MIB</li> <li>• Q-BRIDGE-MIB</li> <li>• RFC1213-MIB</li> <li>• RIPv2-MIB</li> <li>• RMON2-MIB</li> <li>• RMON-MIB</li> <li>• SAVI-MIB</li> <li>• SNMP-FRAMEWORK-MIB</li> <li>• SNMP-MPD-MIB</li> <li>• SNMP-NOTIFICATION-MIB</li> <li>• SNMP-TARGET-MIB</li> <li>• SNMP-USER-BASED-SM-MIB</li> <li>• SNMPv2-MIB</li> <li>• TCP-MIB</li> <li>• UDP-MIB</li> </ul>
Huawei-proprietary MIB	<ul style="list-style-type: none"> <li>• HUAWEI-AAA-MIB</li> <li>• HUAWEI-ACL-MIB</li> <li>• HUAWEI-ALARM-MIB</li> <li>• HUAWEI-ALARM-RELIABILITY-MIB</li> <li>• HUAWEI-BASE-TRAP-MIB</li> <li>• HUAWEI-BRAS-RADIUS-MIB</li> <li>• HUAWEI-BRAS-SRVCFG-EAP-MIB</li> <li>• HUAWEI-BRAS-SRVCFG-STATICUSER-MIB</li> </ul>

Category	MIB
	<ul style="list-style-type: none"> <li>• HUAWEI-CBQOS-MIB</li> <li>• HUAWEI-CDP-COMPLIANCE-MIB</li> <li>• HUAWEI-CONFIG-MAN-MIB</li> <li>• HUAWEI-CPU-MIB</li> <li>• HUAWEI-DAD-TRAP-MIB</li> <li>• HUAWEI-DC-MIB</li> <li>• HUAWEI-DATASYNC-MIB</li> <li>• HUAWEI-DEVICE-MIB</li> <li>• HUAWEI-DHCPR-MIB</li> <li>• HUAWEI-DHCPS-MIB</li> <li>• HUAWEI-DHCP-SNOOPING-MIB</li> <li>• HUAWEI-DIE-MIB</li> <li>• HUAWEI-DNS-MIB</li> <li>• HUAWEI-DLDP-MIB</li> <li>• HUAWEI-ELMI-MIB</li> <li>• HUAWEI-ERPS-MIB</li> <li>• HUAWEI-ERRORDOWN-MIB</li> <li>• HUAWEI-ENERGYMNGT-MIB</li> <li>• HUAWEI-EASY-OPERATION-MIB</li> <li>• HUAWEI-ENTITY-EXTENT-MIB</li> <li>• HUAWEI-ENTITY-TRAP-MIB</li> <li>• HUAWEI-ETHARP-MIB</li> <li>• HUAWEI-ETHOAM-MIB</li> <li>• HUAWEI-FLASH-MAN-MIB</li> <li>• HUAWEI-FWD-RES-TRAP-MIB</li> <li>• HUAWEI-GARP-APP-MIB</li> <li>• HUAWEI-GTSM-MIB</li> <li>• HUAWEI-HGMP-MIB</li> <li>• HUAWEI-HWTACACS-MIB</li> <li>• HUAWEI-IF-EXT-MIB</li> <li>• HUAWEI-INFOCENTER-MIB</li> <li>• HUAWEI-IPPOOL-MIB</li> <li>• HUAWEI-IPV6-MIB</li> <li>• HUAWEI-ISOLATE-MIB</li> <li>• HUAWEI-L2IF-MIB</li> <li>• HUAWEI-L2MAM-MIB</li> <li>• HUAWEI-L2VLAN-MIB</li> <li>• HUAWEI_LDT-MIB</li> <li>• HUAWEI-LLDP-MIB</li> <li>• HUAWEI-MAC-AUTHEN-MIB</li> <li>• HUAWEI-MEMORY-MIB</li> <li>• HUAWEI-MFF-MIB</li> <li>• HUAWEI-MFLP-MIB</li> <li>• HUAWEI-MSTP-MIB</li> <li>• HUAWEI-BGP-VPN-MIB</li> </ul>

Category	MIB
	<ul style="list-style-type: none"> <li>• HUAWEI-CCC-MIB</li> <li>• HUAWEI-MULTICAST-MIB</li> <li>• HUAWEI-NAP-MIB</li> <li>• HUAWEI-NTPV3-MIB</li> <li>• HUAWEI-PERFORMANCE-MIB</li> <li>• HUAWEI-PORT-MIB</li> <li>• HUAWEI-PORTAL-MIB</li> <li>• HUAWEI-QINQ-MIB</li> <li>• HUAWEI-RIPv2-EXT-MIB</li> <li>• HUAWEI-RM-EXT-MIB</li> <li>• HUAWEI-RRPP-MIB</li> <li>• HUAWEI-SECURITY-MIB</li> <li>• HUAWEI-SEP-MIB</li> <li>• HUAWEI-SNMP-EXT-MIB</li> <li>• HUAWEI-SSH-MIB</li> <li>• HUAWEI-STACK-MIB</li> <li>• HUAWEI-SWITCH-L2MAM-EXT-MIB</li> <li>• HUAWEI-SWITCH-SRV-TRAP-MIB</li> <li>• HUAWEI-SYS-MAN-MIB</li> <li>• HUAWEI-TCP-MIB</li> <li>• HUAWEI-TFTPC-MIB</li> <li>• HUAWEI-TRNG-MIB</li> <li>• HUAWEI-XQOS-MIB</li> </ul>

## Standard Compliance

The following table lists the standards that the CloudEngine S5732-H complies with.

[Standard compliance list of the CloudEngine S5732-H series](#)

Standard Organization	Standard or Protocol
IETF	<ul style="list-style-type: none"> <li>• RFC 768 User Datagram Protocol (UDP)</li> <li>• RFC 792 Internet Control Message Protocol (ICMP)</li> <li>• RFC 793 Transmission Control Protocol (TCP)</li> <li>• RFC 826 Ethernet Address Resolution Protocol (ARP)</li> <li>• RFC 854 Telnet Protocol Specification</li> <li>• RFC 951 Bootstrap Protocol (BOOTP)</li> <li>• RFC 959 File Transfer Protocol (FTP)</li> <li>• RFC 1058 Routing Information Protocol (RIP)</li> <li>• RFC 1112 Host extensions for IP multicasting</li> <li>• RFC 1157 A Simple Network Management Protocol (SNMP)</li> <li>• RFC 1256 ICMP Router Discovery</li> <li>• RFC 1305 Network Time Protocol Version 3 (NTP)</li> <li>• RFC 1349 Internet Protocol (IP)</li> <li>• RFC 1493 Definitions of Managed Objects for Bridges</li> <li>• RFC 1542 Clarifications and Extensions for the Bootstrap Protocol</li> </ul>



Standard Organization	Standard or Protocol
	<ul style="list-style-type: none"> <li>• RFC 1643 Ethernet Interface MIB</li> <li>• RFC 1757 Remote Network Monitoring (RMON)</li> <li>• RFC 1901 Introduction to Community-based SNMPv2</li> <li>• RFC 1902-1907 SNMP v2</li> <li>• RFC 1981 Path MTU Discovery for IP version 6</li> <li>• RFC 2131 Dynamic Host Configuration Protocol (DHCP)</li> <li>• RFC 2328 OSPF Version 2</li> <li>• RFC 2453 RIP Version 2</li> <li>• RFC 2460 Internet Protocol, Version 6 Specification (IPv6)</li> <li>• RFC 2461 Neighbor Discovery for IP Version 6 (IPv6)</li> <li>• RFC 2462 IPv6 Stateless Address Auto configuration</li> <li>• RFC 2463 Internet Control Message Protocol for IPv6 (ICMPv6)</li> <li>• RFC 2474 Differentiated Services Field (DS Field)</li> <li>• RFC 2740 OSPF for IPv6 (OSPFv3)</li> <li>• RFC 2863 The Interfaces Group MIB</li> <li>• RFC 2597 Assured Forwarding PHB Group</li> <li>• RFC 2598 An Expedited Forwarding PHB</li> <li>• RFC 2571 SNMP Management Frameworks</li> <li>• RFC 2865 Remote Authentication Dial In User Service (RADIUS)</li> <li>• RFC 3046 DHCP Option82</li> <li>• RFC 3376 Internet Group Management Protocol, Version 3 (IGMPv3)</li> <li>• RFC 3513 IP Version 6 Addressing Architecture</li> <li>• RFC 3579 RADIUS Support For EAP</li> <li>• RFC 4271 A Border Gateway Protocol 4 (BGP-4)</li> <li>• RFC 4760 Multiprotocol Extensions for BGP-4</li> <li>• draft-grant-tacacs-02 TACACS+</li> <li>• RFC 6241 Network Configuration Protocol (NETCONF)</li> <li>• RFC 6020 YANG - A Data Modeling Language for the Network Configuration Protocol (NETCONF)</li> </ul>
IEEE	<ul style="list-style-type: none"> <li>• IEEE 802.1D Media Access Control (MAC) Bridges</li> <li>• IEEE 802.1p Traffic Class Expediting and Dynamic Multicast Filtering</li> <li>• IEEE 802.1Q Virtual Bridged Local Area Networks</li> <li>• IEEE 802.1ad Provider Bridges</li> <li>• IEEE 802.2 Logical Link Control</li> <li>• IEEE Std 802.3 CSMA/CD</li> <li>• IEEE Std 802.3ab 1000BASE-T specification</li> <li>• IEEE Std 802.3ad Aggregation of Multiple Link Segments</li> <li>• IEEE Std 802.3ae 10GE WEN/LAN Standard</li> <li>• IEEE Std 802.3x Full Duplex and flow control</li> <li>• IEEE Std 802.3z Gigabit Ethernet Standard</li> <li>• IEEE802.1ax/IEEE802.3ad Link Aggregation</li> <li>• IEEE 802.3ah Ethernet in the First Mile.</li> <li>• IEEE 802.1ag Connectivity Fault Management</li> <li>• IEEE 802.1ab Link Layer Discovery Protocol</li> </ul>

Standard Organization	Standard or Protocol
	<ul style="list-style-type: none"> <li>IEEE 802.1D Spanning Tree Protocol</li> <li>IEEE 802.1w Rapid Spanning Tree Protocol</li> <li>IEEE 802.1s Multiple Spanning Tree Protocol</li> <li>IEEE 802.1x Port based network access control protocol</li> </ul>
ITU	<ul style="list-style-type: none"> <li>ITU SG13 Y.17ethoam</li> <li>ITU SG13 QoS control Ethernet-Based IP Access</li> <li>ITU-T Y.1731 ETH OAM performance monitor</li> </ul>
ISO	<ul style="list-style-type: none"> <li>ISO 10589 IS-IS Routing Protocol</li> </ul>
MEF	<ul style="list-style-type: none"> <li>MEF 2 Requirements and Framework for Ethernet Service Protection</li> <li>MEF 9 Abstract Test Suite for Ethernet Services at the UNI</li> <li>MEF 10.2 Ethernet Services Attributes Phase 2</li> <li>MEF 11 UNI Requirements and Framework</li> <li>MEF 13 UNI Type 1 Implementation Agreement</li> <li>MEF 15 Requirements for Management of Metro Ethernet Phase 1 Network Elements</li> <li>MEF 17 Service OAM Framework and Requirements</li> <li>MEF 20 UNI Type 2 Implementation Agreement</li> <li>MEF 23 Class of Service Phase 1 Implementation Agreement</li> <li>Xmodem XMODEM/YMODEM Protocol Reference</li> </ul>

## Ordering Information

The following table lists ordering information of the CloudEngine S5732-H series switches.

Model	Product Description
CloudEngine S5732-H24S6Q	CloudEngine S5732-H24S6Q (20 x GE SFP ports, 4 x 10GE SFP+ ports, 6 x 40GE QSFP+ ports, without power module)
CloudEngine S5732-H48S6Q	CloudEngine S5732-H48S6Q (44 x GE SFP ports, 4 x 10GE SFP+ ports, 6 x 40GE QSFP+ ports, without power module)
PAC600S12-CB	600W AC power module
PDC1000S12-DB	1000W DC power module
FAN-031A-B	Fan module
L-1AP-S57	S57 Series, Wireless Access Controller AP Resource License-1AP
N1-S57H-M-Lic	S57XX-H Series Basic SW, Per Device
N1-S57H-M-SnS1Y	S57XX-H Series Basic SW, SnS, Per Device, 1 Year
N1-S57H-F-Lic	N1-CloudCampus, Foundation, S57XX-H Series, Per Device
N1-S57H-F-SnS1Y	N1-CloudCampus, Foundation, S57XX-H Series, SnS, Per Device, 1 Year
N1-S57H-A-Lic	N1-CloudCampus, Advanced, S57XX-H Series, Per Device
N1-S57H-A-SnS1Y	N1-CloudCampus, Advanced, S57XX-H Series, SnS, Per Device, 1 Year
N1-S57H-FToA-Lic	N1-Upgrade-Foundation to Advanced, S57XX-H, Per Device
N1-S57H-FToA-	N1-Upgrade-Foundation to Advanced, S57XX-H, SnS, Per Device, 1 Year

Model	Product Description
SnS1Y	

## More Information

For more information about Huawei Campus Switches, visit <http://e.huawei.com> or contact us in the following ways:


- Global service hotline: <http://e.huawei.com/en/service-hotline>
- Logging in to the Huawei Enterprise technical support website: <http://support.huawei.com/enterprise/>
- Sending an email to the customer service mailbox: [support\\_e@huawei.com](mailto:support_e@huawei.com)

---

**Copyright © Huawei Technologies Co., Ltd. 2020. All rights reserved.**

No part of this document may be reproduced or transmitted in any form or by any means without prior written consent of Huawei Technologies Co., Ltd.

### Trademarks and Permissions

 HUAWEI and other Huawei trademarks are trademarks of Huawei Technologies Co., Ltd.

All other trademarks and trade names mentioned in this document are the property of their respective holders.

### Notice

The purchased products, services and features are stipulated by the contract made between Huawei and the customer. All or part of the products, services and features described in this document may not be within the purchase scope or the usage scope. Unless otherwise specified in the contract, all statements, information, and recommendations in this document are provided "AS IS" without warranties, guarantees or representations of any kind, either express or implied.

The information in this document is subject to change without notice. Every effort has been made in the preparation of this document to ensure accuracy of the contents, but all statements, information, and recommendations in this document do not constitute a warranty of any kind, express or implied.

### Huawei Technologies Co., Ltd.

Address: Huawei Industrial Base Bantian,  
Longgang Shenzhen 518129 People's  
Republic of China

Website: [e.huawei.com](http://e.huawei.com)