



LEADING NEW ICT

Huawei WLAN Interoperability Successful Story

EN

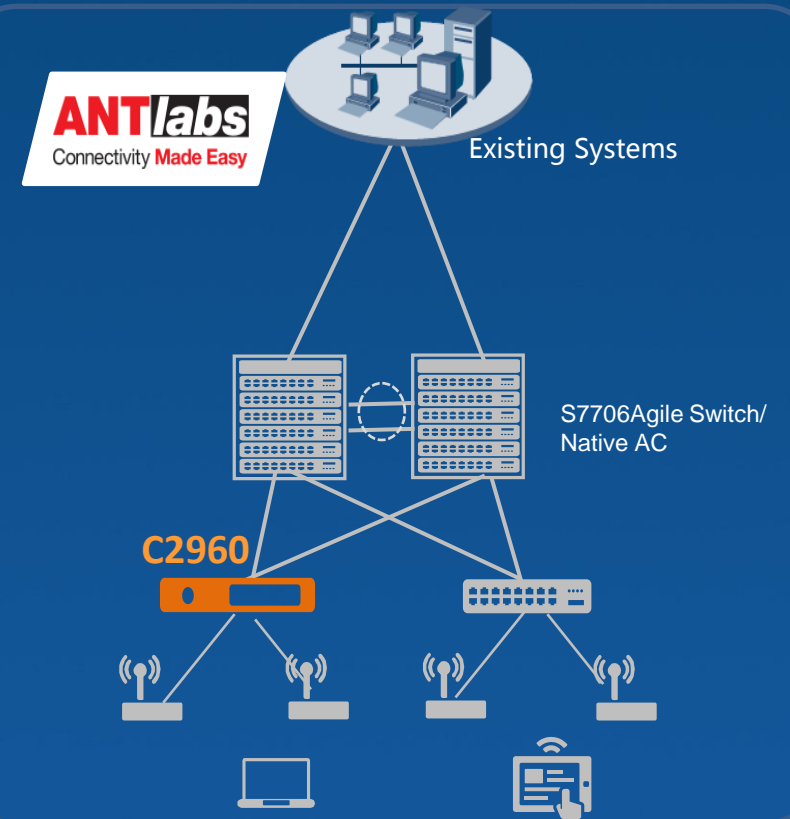
Background & Requirements :

- As a biggest 4-star chain hotel in Dubai, it provides **1000+** rooms in a **41** layers building.
- Outstanding **TripAdvisor** was awarded in **2013** and **2014**.
- To guarantee guests' experience, network upgrading must have capacity to interconnect with existing device and PMS.

Solution:

Device : S7700, 5700LI, AP2030DN, AP4030DN, AP8030DN

- **AC manages AP across other vendor's device:** to meet smooth upgrading with lower investment by reusing existing device
- **SVF simplifies Management:** virtualizing network into a 'device', other vendor's device acts as a penetrate layer 2 network
- **Protocol Interconnection minimizes compatibility issue:** LLDP and CDP are compatible, STP and PVST(PVST+) are compatible, SEP and REP are compatible
- **Interconnection with ANTLabs to provide Billing service**



Background & Requirements :

- The Company is an Italian retailer specializing in home appliances and digital products. The company is Top 1 appliance supermarket chain in Italy, with 120 self-owned stores 100 franchised stores' products, the annual sales reached 1.4 billion euros.
- Interoperate with freeluna for the marketing optimization.

Solution:

Device : AC6605, AP5030DN, eSight, Agile Controller.

- **2*AC6605** , **n*AP5030DN** are deployed in the 120 shops.
- **1+1 AC backup**, inter-WAN management on Aps
- **Single-instance VRRP**, quickly eliminating faults and coverage holes
- interoperate with professional Retail marketing platform **Freeluna** for marketing optimization.

HQ data center



Wi-Fi User Authenticates with ISE Through Huawei Device in a Saudi University LEADING NEW ICT

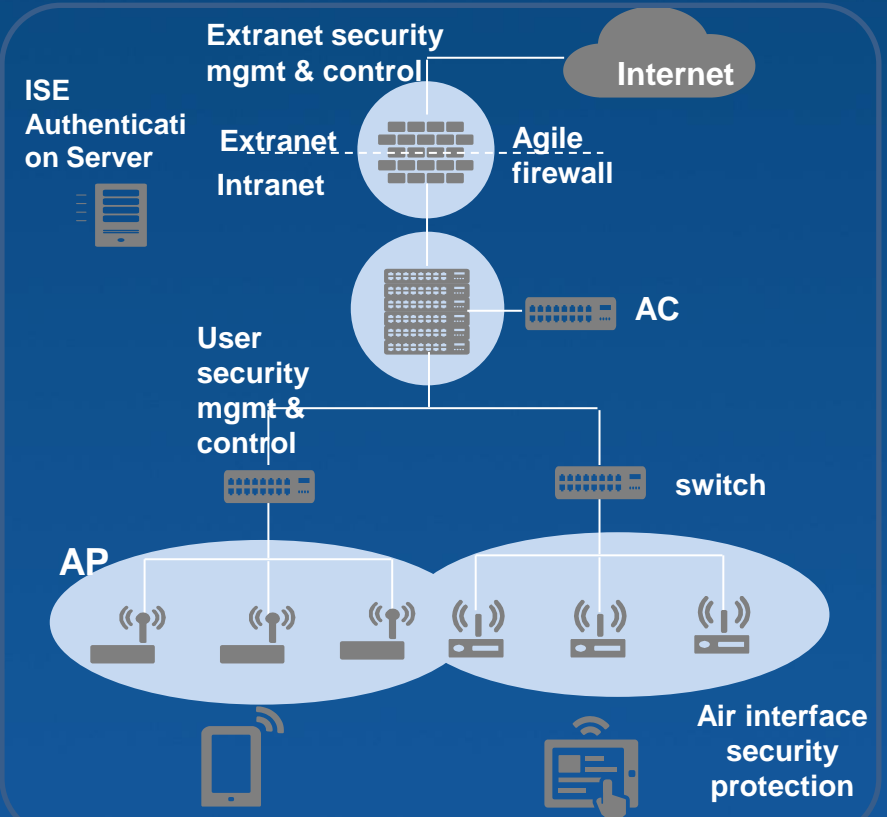
Background & Requirements :

- The oldest university located in Saudi Arabia with leading position in medical field aims to become one of the best universities.
- Existing equipment is facing the expiration of service and it needs to be replaced and upgraded

Solutions :

Devices : S5720SI, AP5030DN

- **Wireless user authentication :** ISE terminals access to Huawei device , and authenticate with ISE through MAC priority portal authentication.
- **Policy delivery :** In terms of access control, access policy can be batch delivered by Huawei devices through the ISE.



Wi-Fi Interoperates with Walkbase to Build a Smart Community in Dubai LEADING NEW ICT

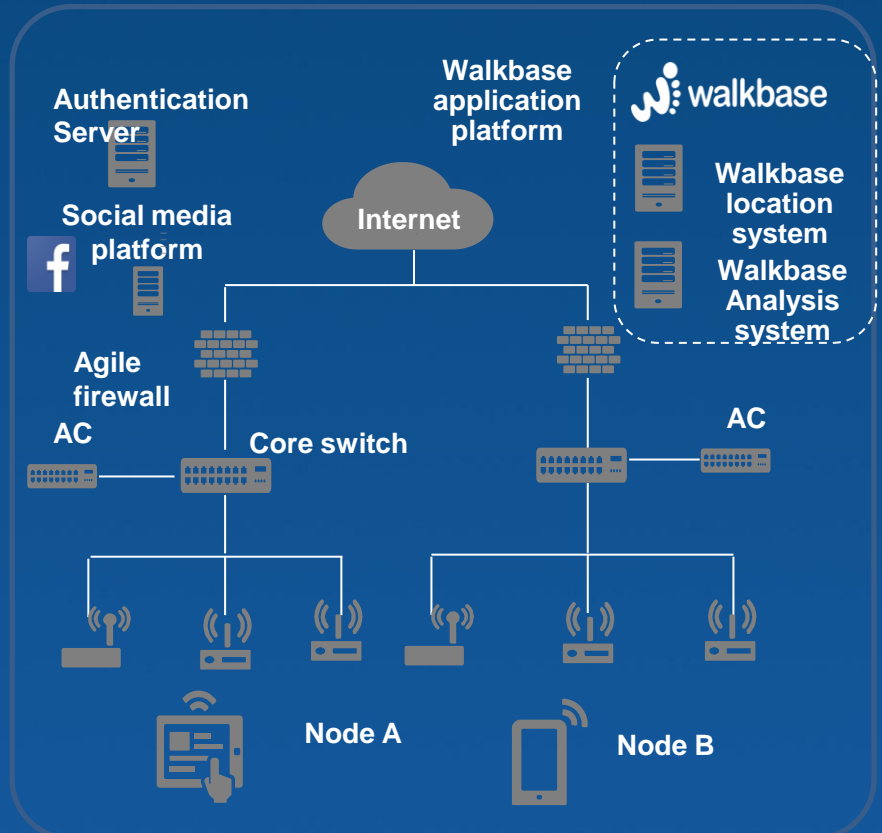
Background&requirements :

- One of the key project of Smart Dubai Office. It is highly acknowledged to lead new direction of Smart Dubai.
- Besides basic WiFi access service in Venues, Value Added Services is also expected to process a commercial market activities based on location analytics with high accuracy and non-intrusive

Solutions :

Devices : S12708, AP8130

- **Wi-Fi access for multiple scenarios :** Great WiFi coverage in indoor, outdoor, high-density, location scenarios
- **Smart roaming :** Seamless roaming and fast switchover within 50 ms ensure uninterrupted network access for moving users
- **Efficient Locating :** Locating based on Wi-Fi Bluetooth technologies improve location accuracy of 3–5 m or even 1 m (Bluetooth location)



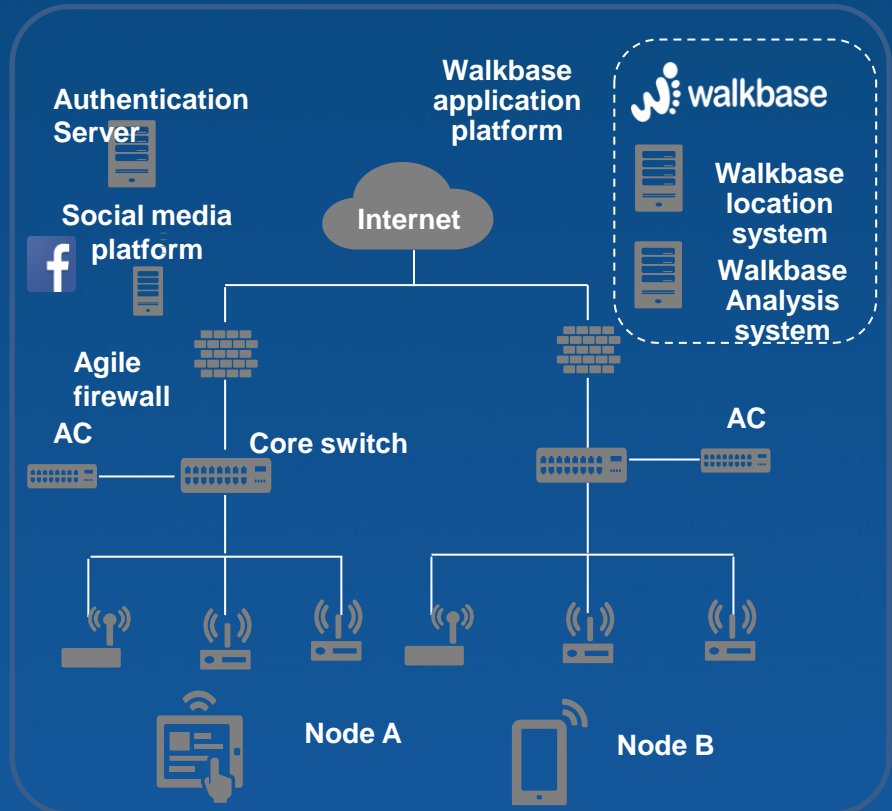
Background & requirements :

- The customer Besides basic WiFi access service in Venues, Value Added Services is also expected to process a commercial market activities based on location analytics with high accuracy and non-intrusive

Solutions :

Devices : S12708, AP8130

- **Wi-Fi access for multiple scenarios :** Great WiFi coverage in indoor, outdoor, high-density, location scenarios
- **Smart roaming :** Seamless roaming and fast switchover within 50 ms ensure uninterrupted network access for moving users
- **Efficient Locating :** Locating based on Wi-Fi Bluetooth technologies improve location accuracy of 3–5 m or even 1 m (Bluetooth location)





THANK YOU

Copyright©2015 Huawei Technologies Co., Ltd. All Rights Reserved.

The information in this document may contain predictive statements including, without limitation, statements regarding the future financial and operating results, future product portfolio, new technology, etc. There are a number of factors that could cause actual results and developments to differ materially from those expressed or implied in the predictive statements. Therefore, such information is provided for reference purpose only and constitutes neither an offer nor an acceptance. Huawei may change the information at any time without notice.