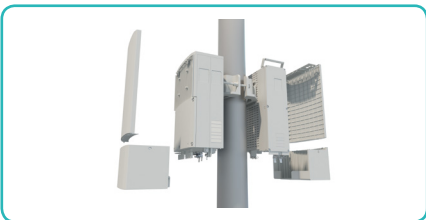


PowerCube 500



Introduction

Huawei PowerCube 500 is a highly integrated power and service transmission solution, which is widely used in Safe City & Smart City infrastructures. It configures high performance power module, Huawei special-design lithium battery, multi-function service module and intelligent OSS, provides continuous power and flexible transmission approaches for video surveillance and information access applications, one-stop deployment greatly improve the system reliability and enhance the ease of maintenance.

Key Features

Simple Deployment

- Multiple modes of output: 12 Vdc, 24 Vac, PoE, PoE+, PoE++
- Small size, light weight, pole/wall mounted, one-stop installation

Reliable Power Supply

- Protection Rating: IP65
- Wide environment temperature adaptability: -40°C to +55°C

Flexible Service Transmission

- Multi-services: Ethernet, GPON, Microwave
- 8 Services ports

Intelligent Management

- All-in-one site management by mobile APP

Scenarios

PowerCube 500 could be efficiently applied in kinds of scenarios like video site, tail information site, transmission network site, etc. It could be deployed for:

- Pure Grid Site
- Grid & Solar Site



Grid Solution

Solar + Grid Solution

■ Specifications

		PowerCube 500	Battery Module
System	Dimension (W × D × H)	300 mm × 150 mm × 400 mm	300 mm × 120 mm × 400 mm
	Dimension with Sunshield	310 mm × 160 mm × 560 mm	310 mm × 160 mm × 560 mm
	Weight	18 kg	20 kg
	Cooling Mode	Natural heat dissipation	
	Installation Mode	Pole & Wall mounted	
	Network Access	Ethernet, GPON, Microwave	
AC/DC Distribution	Grid Input Mode	220 Vac single-phase 110 Vac dual-live wire	-48 Vdc
	Grid Input Voltage	85-300 Vac, rated: 220 Vac	————
	Solar Input Voltage	24-130 Vdc	————
	MPPT Tracking Precision	≥ 98%	————
	Rated Input Frequency	47 Hz-65 Hz, rated: 50 Hz	————
	Rated Output Power	Total 150 W: 1 x 12 Vdc (Max. 48 W) 1 x 24 Vac (Max. 72 W) PoE, PoE+, PoE++	-48 Vdc
Interface	Surge Protection	Output: 12 Vdc: 3kA/5kA (8/20μs), 24 Vac: 2kV/6kV AC Input: 20kA (Common/ Different mode) PoE ports surge protection	————
	Service Ports	Ethernet/GPON/Microwave access: 2 x SFP (GE o, GPON), 5 x GE (PoE/PoE+/PoE++), 1 x GE (e)	
	GPON Specification	Transmit Rate:1.244 Gbit/s (TX), 2.488 Gbit/s (RX) Fiber: Single Mode, SC/UPC Max. 20 Km	
	AUX Ports	1 NMS port, WLAN module, 1-input & 1-output alarm	
	Faulty Detection	Physical faulty detection, status monitoring and alarm for all service ports. Status monitoring for inserted modules.	
	Service Type	E-Line (Point –to-Point, VLAN, QinQ): 1024 E-LAN (802.1d, 802.1q, 802.1ad): 16	
Ethernet Features	Service Protection	ERPS (v1/v2), SEP, LAG, Wired/Wireless backup	
	VLAN Quantity	1~4094	
	MAC Address Quantity	Static: 16384, Dynamic: 512	
	LAG	Manual/Static aggregation, Load sharing/non-sharing	
	Protection Switching	LAG/ERPS < 50 ms, SEP < 100 ms	
	QoS	8 Queues, SP+WRR, DiffSrv, Flow control (IEEE 802.3x), CAR, Shapping	
OAM	Security	IEEE 802.1x access authorization, Anti-theft design	
	NMS	Unified eSight NMS (include MW), Web-based NMS built-in device, mobile APP through wifi	
Environment	Operating Temperature Range	-40°C to +55°C (including solar radiation)	Discharge: -40°C to 55°C; Charge: 0°C to 55°C
	Storage Temperature	-40°C to +70°C (including solar radiation)	0°C to 40°C
	Operating Humidity	5%-95% (no condensation)	
	Altitude	0-4000 m (1°C per 200 m temperature derating from 2000 - 4000 m)	
	Wind-resistance Level	≤ 40 m/s	
	Noise Level	≤ 65 dBA@1.5m, satisfy the GR487 standard	
	Protection Rating	IP65	