





S2720-EI Series Enterprise Switches




The S2720-EI is a next-generation access switch that provides flexible 100M, GE access ports and GE uplink ports.

Product Overview

Building on next-generation, high-performance hardware and the Huawei Versatile Routing Platform (VRP), the S2720-EI supports intelligent stack (iStack), flexible Ethernet networking, and diversified security control. It provides customers with a green, easy-to-manage, easy-to-expand, and cost-effective 100M to the desktop solution.

Models and Appearances

Models and Appearances	Description
 <p>S2720-12TP-EI</p>	<ul style="list-style-type: none"> • 4 × Ethernet 10/100 Base-Tx ports, 4 × Ethernet 10/100/1000 Base-T ports, 2 × Gig SFP ports, 2 × combo Gig ports • AC power supply • Forwarding performance: 12.6Mpps • Switching capacity: 68Gbps
 <p>S2720-12TP-PWR-EI</p>	<ul style="list-style-type: none"> • 4 × Ethernet 10/100 Base-Tx ports, 4 × Ethernet 10/100/1000 Base-T ports, 2 × Gig SFP ports, 2 × combo Gig ports • AC power supply • PoE+ • Forwarding performance: 12.6Mpps • Switching capacity: 68Gbps
 <p>S2720-28TP-PWR-EI-L</p>	<ul style="list-style-type: none"> • 16 × Ethernet 10/100 Base-Tx ports, 8 × Ethernet 10/100/1000 Base-T ports, 2 × Gig SFP ports, 2 × combo Gig ports • 8 × PoE+ ports • AC power supply • Forwarding performance: 20.4Mpps • Switching capacity: 68Gbps
 <p>S2720-28TP-EI</p>	<ul style="list-style-type: none"> • 16 × Ethernet 10/100 Base-Tx ports, 8 × Ethernet 10/100/1000 Base-T ports, 2 × Gig SFP ports, 2 × combo Gig ports • AC power supply • Forwarding performance: 20.4Mpps • Switching capacity: 68Gbps

Models and Appearances	Description
 S2720-28TP-PWR-EI	<ul style="list-style-type: none"> • 16 × Ethernet 10/100 Base-Tx ports, 8 × Ethernet 10/100/1000 Base-T ports, 2 × Gig SFP ports, 2 ×combo Gig ports • AC power supply • PoE+ • Forwarding performance: 20.4Mpps • Switching capacity: 68Gbps
 S2720-52TP-EI	<ul style="list-style-type: none"> • 32 × Ethernet 10/100 Base-Tx ports, 16 × Ethernet 10/100/1000 Base-T ports, 4 × Gig SFP ports • AC power supply • Forwarding performance: 34.8Mpps • Switching capacity: 336Gbps
 S2720-52TP-PWR-EI	<ul style="list-style-type: none"> • 32 × Ethernet 10/100 Base-Tx ports, 16 × Ethernet 10/100/1000 Base-T ports, 4 × Gig SFP ports • AC power supply • PoE+ • Forwarding performance: 34.8Mpps • Switching capacity: 336Gbps

Product Specifications

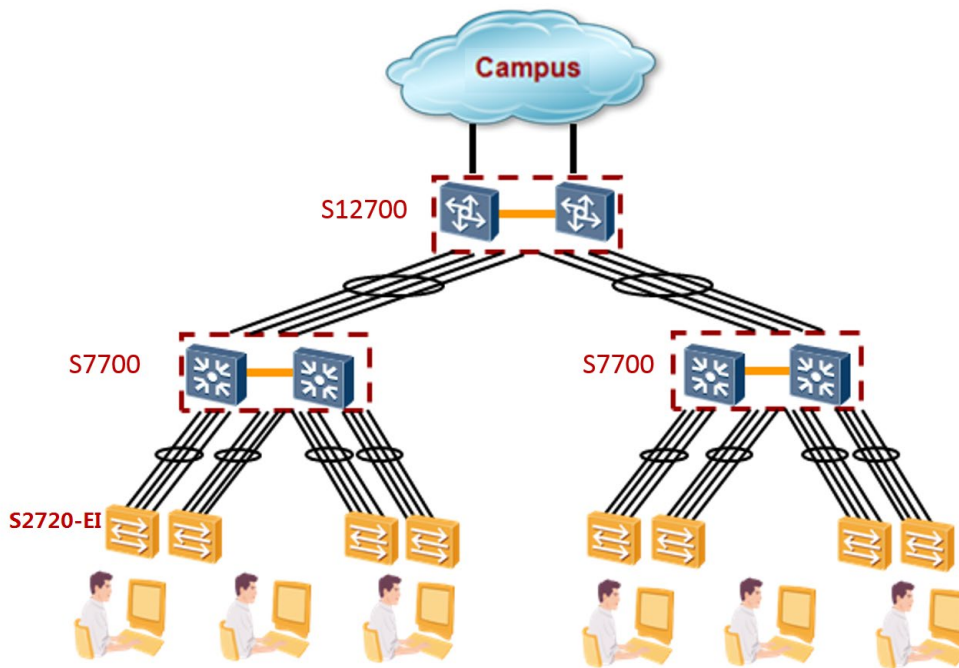
Item	S2720-12TP-EI S2720-12TP-PWR-EI	S2720-28TP-PWR-EI-L S2720-28TP-EI S2720-28TP-PWR-EI	S2720-52TP-EI S2720-52TP-PWR-EI
Fixed ports	4 × Ethernet 10/100 Base-Tx ports, 4 × Ethernet 10/100/1000 Base-T ports, 2 × Gig SFP ports, 2 ×combo Gig ports	16 × Ethernet 10/100 Base-Tx ports, 8 × Ethernet 10/100/1000 Base-T ports, 2 × Gig SFP ports, 2 ×combo Gig ports	32 × Ethernet 10/100 Base-Tx ports, 16 × Ethernet 10/100/1000 Base-T ports, 4 × Gig SFP ports
MAC address table	16K MAC address entries MAC address learning and aging Static, dynamic, and blackhole MAC address entries Interface-based MAC learning limiting		
VLAN features	4K VLANs Guest VLAN and voice VLAN GVRP MUX VLAN VLAN assignment based on MAC addresses, protocols, IP subnets, policies, and interfaces 1:1 and N:1 VLAN mapping		
Ethernet loop protection	RRPP ring topology and RRPP multi-instance Smart Link tree topology and Smart Link multi-instance, providing millisecond-level protection switchover SEP ERPS (G.8032) STP (IEEE 802.1d), RSTP (IEEE 802.1w), and MSTP (IEEE 802.1s)		
Reliability	EFM OAM (802.3ah)		

Item	S2720-12TP-EI S2720-12TP-PWR-EI	S2720-28TP-PWR-EI-L S2720-28TP-EI S2720-28TP-PWR-EI	S2720-52TP-EI S2720-52TP-PWR-EI
	CFM OAM (802.1ag) ITU-Y.1731 DLDP LACP		
IP routing	Static route, RIP, RIPng, OSPF		
IPv6 features	Neighbor Discovery (ND) Path MTU (PMTU) IPv6 ping, IPv6 tracert, and IPv6 Telnet		
Multicast	IGMPv1/v2/v3 snooping Controllable multicast Interface-based multicast traffic statistics MLDv1/v2 snooping (Multicast Listener Discovery snooping)		
QoS/ACL	Rate limiting by an interface Eight queues on each interface WRR, DRR, SP, WRR+SP, and DRR+SP queue scheduling algorithms Re-marking of the 802.1p priority and DSCP priority Rate limiting in each queue and traffic shaping on interfaces		
Security	Port isolation, port security, and sticky MAC MFF Blackhole MAC address entries Limit on the number of learned MAC addresses IEEE 802.1x authentication and limit on the number of users on an interface AAA authentication, RADIUS authentication, HWTACACS authentication, and NAC SSH V2.0 Hypertext Transfer Protocol Secure (HTTPS) CPU defense Blacklist and whitelist DHCP relay, DHCP server, DHCP snooping DHCPv6 relay, DHCPv6 server, DHCPv6 snooping		
Lightning protection	Service interface: 7 kV		
Super Virtual Fabric (SVF)	Working as an SVF client that is plug-and-play with zero configuration Automatically loading the system software package and patches of clients One-click and automatic delivery of service configurations Supports independent running client		
Management and maintenance	iStack Virtual Cable Test (VCT) Remote configuration and maintenance using Telnet SNMPv1/v2c/v3 RMON		

Item	S2720-12TP-EI S2720-12TP-PWR-EI	S2720-28TP-PWR-EI-L S2720-28TP-EI S2720-28TP-PWR-EI	S2720-52TP-EI S2720-52TP-PWR-EI
	eSight and web-based NMS HTTPS LLDP/LLDP-MED System logs and multi-level alarms 802.3az EEE		
Interoperability	Supports VBST (Compatible with PVST/PVST+/RPVST) Supports LNP (Similar to DTP) Supports VCMP (Similar to VTP)		
Operating environment	<ul style="list-style-type: none"> Operating temperature: <ul style="list-style-type: none"> 0m to 1,800m: 0°C to 45°C 1,800m to 5,000m (decreases 1°C for every 220m increase in altitude) Relative humidity: 5% to 95% (noncondensing) 	<ul style="list-style-type: none"> Operating temperature: <ul style="list-style-type: none"> 0m to 1,800m: 0°C to 45°C 1,800m to 5,000m (decreases 1°C for every 220m increase in altitude) Relative humidity: 5% to 95% (noncondensing) 	<ul style="list-style-type: none"> Operating temperature: <ul style="list-style-type: none"> 0m to 1,800m: 0°C to 45°C 1,800m to 5,000m (decreases 1°C for every 220m increase in altitude) Relative humidity: 5% to 95% (noncondensing)
Input voltage	AC: <ul style="list-style-type: none"> Rated voltage range: 100 V to 240 V AC, 50/60 Hz Maximum voltage range: 90 V to 264 V AC, 47/63 Hz 	AC: <ul style="list-style-type: none"> Rated voltage range: 100 V to 240 V AC, 50/60 Hz Maximum voltage range: 90 V to 264 V AC, 47/63 Hz 	AC: <ul style="list-style-type: none"> Rated voltage range: 100 V to 240 V AC, 50/60 Hz Maximum voltage range: 90 V to 264 V AC, 47/63 Hz
Dimensions (WxDxH)	<ul style="list-style-type: none"> S2720-12TP-EI: 250x180x43.6 mm S2720-12TP-PWR-EI: 320x220x43.6 mm 	<ul style="list-style-type: none"> S2720-28TP-PWR-EI: 442x310x43.6 mm S2720-28TP-EI/S2720-28TP-PWR-EI-L: 442x220x43.6 mm 	<ul style="list-style-type: none"> S2720-52TP-EI: 442x220x43.6 mm S2720-52TP-PWR-EI: 442x310x43.6 mm
Max. Power Consumption	<ul style="list-style-type: none"> S2720-12TP-EI: 12.85W S2720-12TP-PWR-EI: <ul style="list-style-type: none"> Without PD: 15.61W With PD: 160.5W (PoE: 123.2W) 	<ul style="list-style-type: none"> S2720-28TP-PWR-EI: <ul style="list-style-type: none"> Without PD: 37.8W With PD: 444.9W (PoE: 370W) S2720-28TP-EI: 20.1W S2720-28TP-PWR-EI-L: <ul style="list-style-type: none"> Without PD: 24.8W With PD: 167W (PoE: 123.2W) 	<ul style="list-style-type: none"> S2720-52TP-EI: 40.3W S2720-52TP-PWR-EI: <ul style="list-style-type: none"> Without PD: 53.7W With PD: 435W (PoE: 370W)

Networking and Applications

The S2720-EI provides 100M desktop access functions for a high performance network, such as voice VLAN, NAC and so on.



Ordering Information

Item	Product Description
1	S2720-12TP-EI (4 × Ethernet 10/100 Base-Tx ports, 4 × Ethernet 10/100/1000 Base-T ports, 2 × Gig SFP ports, 2 × combo Gig ports, AC 110/220V)
2	S2720-12TP-PWR-EI (4 × Ethernet 10/100 Base-Tx ports, 4 × Ethernet 10/100/1000 Base-T ports, 2 × Gig SFP ports, 2 × combo Gig ports, 124W PoE AC 110/220V)
3	S2720-28TP-PWR-EI (16 × Ethernet 10/100 Base-Tx ports, 8 × Ethernet 10/100/1000 Base-T ports, 2 × Gig SFP ports, 2 × combo Gig ports, 370W PoE AC 110/220V)
4	S2720-28TP-PWR-EI-L (16 × Ethernet 10/100 Base-Tx ports, 8 × Ethernet 10/100/1000 Base-T ports, 2 × Gig SFP ports, 2 × combo Gig ports, 8 ports PoE+, 124W PoE AC 110/220V)
5	S2720-28TP-EI (16 × Ethernet 10/100 Base-Tx ports, 8 × Ethernet 10/100/1000 Base-T ports, 2 × Gig SFP ports, 2 × combo Gig ports, AC 110/220V)
6	S2720-52TP-EI (32 × Ethernet 10/100 Base-Tx ports, 16 × Ethernet 10/100/1000 Base-T ports, 4 × Gig SFP ports, AC 110/220V)
7	S2720-52TP-PWR-EI (32 × Ethernet 10/100 Base-Tx ports, 16 × Ethernet 10/100/1000 Base-T ports, 4 × Gig SFP ports, 370W PoE AC 110/220V)

More Information


For more information about Huawei Campus Switches, visit <http://e.huawei.com> or contact us in the following ways:

- Global service hotline: <http://e.huawei.com/en/service-hotline>
- Logging in to the Huawei Enterprise technical support website: <http://support.huawei.com/enterprise/>
- Sending an email to the customer service mailbox: support_e@huawei.com

Copyright © Huawei Technologies Co., Ltd. 2018. All rights reserved.

No part of this document may be reproduced or transmitted in any form or by any means without prior written consent of Huawei Technologies Co., Ltd.

Trademarks and Permissions

 HUAWEI and other Huawei trademarks are trademarks of Huawei Technologies Co., Ltd.

All other trademarks and trade names mentioned in this document are the property of their respective holders.

Notice

The purchased products, services and features are stipulated by the contract made between Huawei and the customer. All or part of the products, services and features described in this document may not be within the purchase scope or the usage scope. Unless otherwise specified in the contract, all statements, information, and recommendations in this document are provided "AS IS" without warranties, guarantees or representations of any kind, either express or implied.

The information in this document is subject to change without notice. Every effort has been made in the preparation of this document to ensure accuracy of the contents, but all statements, information, and recommendations in this document do not constitute a warranty of any kind, express or implied.

Huawei Technologies Co., Ltd.

Address: Huawei Industrial Base Bantian,
Longgang Shenzhen 518129 People's
Republic of China

Website: e.huawei.com