

S5700-HI Series Gigabit Enterprise Switches





S5700-HI Series Gigabit Enterprise Switches

Product Overview

The S5700-HI series (hereafter referred to as S5700-HI) are advanced gigabit Ethernet switches developed by Huawei, providing flexible gigabit access and 10G/40G uplink ports. Based on next-generation, high-performance hardware and Huawei Versatile Routing Platform (VRP), the S5700-HI provides excellent NetStream function, flexible Ethernet networking, comprehensive VPN tunneling technologies, diversified security mechanisms, mature IPv6 features, and are easy to manage and maintain. All these features make the S5700-HI the best choice as an access switch on large and medium-sized campus networks or data centers and aggregation switch on small campus networks.

Note: S5700-HI mentioned in this document refers to the whole S5700-HI series including S5710-HI, and descriptions about S5710-HI are unique features of S5710-HI.

Product Appearance

S5700-28C-HI



- 24 10/100/1000Base-T ports
- Subcards supported: 4x1000Base-X SFP subcard, 2x10GE SFP+ subcard, and 4x10GE SFP+ subcard
- Double swappable AC/DC power supplies
- Forwarding performance: 96 Mpps

S5700-28C-HI-24S



- 24 100/1000Base-X ports
- Subcards supported: 4x1000Base-X SFP subcard, 2x10GE SFP+ subcard, and 4x10GE SFP+ subcard
- Double swappable AC/DC power supplies
- Forwarding performance: 96 Mpps

S5710-108C-PWR-HI



front



back

- 48 10/100/1000BASE-T ports and 8 10GE SFP+ ports
- Three slots on the front panel: support 16x1000Base-X SFP and 16x10/100/1000Base-T subcards
- One slot at the rear panel: supports 4x40GE QSFP+ and 4x10GE SFP+ subcards
- Double swappable AC power supplies
- Forwarding performance: 504 Mpps

Product Features and highlights

Various Combination of Ports

- The S5710-HI has four subcard slots that can accommodate various extended subcards to provide high-density 10GE/40GE uplink ports. With its eight fixed 10GE SFP+ ports, the S5710-HI can have different subcards installed to provide flexible combination of ports, including 48*GE+8*10GE, 96*GE+8*10GE, 96*GE+12*10GE, and 96*GE+8*10GE+4*40GE. In addition, the S5710-HI provides both optical and electrical ports for flexible access and supports PoE+. The flexible port combinations meet different bandwidth upgrading requirements and protect customers' investment.

Comprehensive VPN Technologies

- The S5700-HI allows users in different VPNs to connect to the same switch and isolates users through multi-instance routing. The S5710-HI supports Multiprotocol Label Switching (MPLS) QoS, MPLS traffic engineering (TE), virtual leased line (VLL), virtual private LAN service (VPLS), and Layer 3 virtual private network (L3VPN). They can provide high-quality private line access services for enterprises and are cost-effective case-shaped MPLS switches.

Flexible Ethernet Networking

- In addition to traditional Spanning Tree Protocol (STP), Rapid Spanning Tree Protocol (RSTP), and Multiple Spanning Tree Protocol (MSTP), the S5700-HI supports Huawei-developed Smart Ethernet Protection (SEP) technology and the latest Ethernet Ring Protection Switching (ERPS) standard. SEP is a ring protection protocol specific to the Ethernet link layer, and applies to various ring network topologies, such as open ring topology, closed ring topology, and cascading ring topology. This protocol is reliable, easy to maintain, and implements fast protection switching within 50 ms. ERPS is defined in ITU-T G.8032. It implements millisecond-level protection switching based on traditional Ethernet MAC and bridging functions.
- The S5700-HI supports Smart Link and Virtual Router Redundancy Protocol (VRRP), which implement backup of uplinks. One S5700-HI switch can connect to multiple aggregation switches through multiple links, significantly improving reliability of access devices. In addition, the S5700-HI provides multiple connection fault detection mechanisms, including Ethernet OAM (IEEE 802.3ah/802.1ag /ITU Y.1731) and Bidirectional Forwarding Detection (BFD). The S5700-HI (except S5710-HI) provides hardware-based 3.3 ms Ethernet OAM and 10 ms BFD.

Diversified Security Control

- The S5700-HI supports MAC address authentication and 802.1X authentication and implements dynamic delivery of policies (VLAN, QoS, and ACL) to users.

- The S5700-HI provides a series of mechanisms to defend against DoS attacks and user-targeted attacks. DoS attacks are targeted at switches and include SYN flood, Land, Smurf, and ICMP flood attacks. User-targeted attacks include bogus DHCP server attacks, IP/MAC address spoofing, DHCP request flood, and change of the DHCP CHADDR value. You can specify DHCP snooping trusted and untrusted ports to ensure that users connect only to the authorized DHCP server.
- The S5700-HI supports strict ARP learning. This feature prevents ARP spoofing attackers from exhausting ARP entries so that users can connect to the Internet normally.

Easy Operation

- The S5700 supports EasyOperation, a solution that provides auto configuration, plug-and-play, USB-based deployment, and batch remote upgrade. The EasyOperation solution facilitates device deployment, upgrade, service provisioning, and other management and maintenance operations, and also greatly reduces costs of operation and maintenance.
- The S5700 can be managed and maintained using Simple Network Management Protocol (SNMP) V1, V2, and V3, command line interface (CLI), web-based network management system, or Secure Shell (SSH) V2.0. Additionally, it supports remote network monitoring (RMON), multiple log hosts, port traffic statistics collection, and network quality analysis that help in network consolidation and reconstruction.
- The S5700-HI can use the General VLAN Registration Protocol (GVRP) to implement dynamic distribution, registration, and propagation of VLAN attributes. GVRP reduces manual configuration workload and ensures correct configuration. Besides, the S5700-HI supports the MUX VLAN function, which involves a principal VLAN and multiple subordinate VLANs. Subordinate VLANs are classified into group VLANs and separate VLANs. Ports in the principal VLAN can communicate with ports in subordinate VLANs. Ports in a subordinate group VLAN can communicate with each other, whereas ports in a subordinate separate VLAN can communicate only with ports in the principal VLAN.

Mature IPv6 Technologies

- The S5700-HI uses the mature, stable Versatile Routing Platform (VRP) and supports IPv4/IPv6 dual stacks, IPv6 routing protocols (RIPng, OSPFv3, BGP4+, and IS-IS for IPv6), and IPv6 over IPv4 tunnels including manual, 6-to-4, and Intra-Site Automatic Tunnel Addressing Protocol (ISATAP) tunnels. With these IPv6 features, the S5710-HI can be deployed on a pure IPv4 network, a pure IPv6 network, or a shared IPv4/IPv6 network, helping realize IPv4-to-IPv6 transition.

Excellent Network Traffic Analysis

- The S5700-HI provides the NetStream function and can function as a NetStream data exporter. It periodically collects data traffic statistics, encapsulates the statistics in standard V5, V8, or V9 packets, and sends the packets to the NetStream data collector according to NetStream configuration. The collected statistics are then processed to dynamically generate reports, analyze traffic attributes, and generate alarms on abnormal traffic. The NetStream function helps you optimize network structure and adjust resource deployment in a timely manner.
- The S5700-HI supports the sFlow function. It uses a method defined in the sFlow standard to sample traffic passing through it and sends sampled traffic to the collector in real time. The collected traffic statistics are used to generate statistical reports, helping enterprises maintain their networks.

Product Specifications

Item	S5700-28C-HI	S5700-28C-HI-24S	S5710-108C-PWR-HI
Fixed ports	24*10/100/1000Base-T	24*100/1000Base-X	48*10/100/1000BASE-T, 8*10GE SFP+
Extended slots	Provided for uplink interface subcards		Three front extended slots and one rear extended slot
MAC address table	IEEE 802.1d compliance 32K MAC address entries MAC address learning and aging Static, dynamic, and blackhole MAC address entries Packet filtering based on source MAC addresses		IEEE 802.1d compliance 456K MAC address entries MAC address learning and aging Static, dynamic, and blackhole MAC address entries Packet filtering based on source MAC addresses
VLAN	4K VLANs Guest VLAN and voice VLAN VLAN assignment based on MAC addresses, protocols, IP subnets, policies, and ports 1:1 and N:1 VLAN Mapping		
Reliability	RRPP ring topology and RRPP multi-instance Smart Link tree topology and Smart Link multi-instance, providing the millisecond-level protection switchover SEP ERPS(G.8032) BFD for OSPF, BFD for IS-IS, BFD for VRRP, and BFD for PIM STP(IEEE 802.1d), RSTP(IEEE 802.1w), and MSTP(IEEE 802.1s) BPDU protection, root protection, and loop protection		

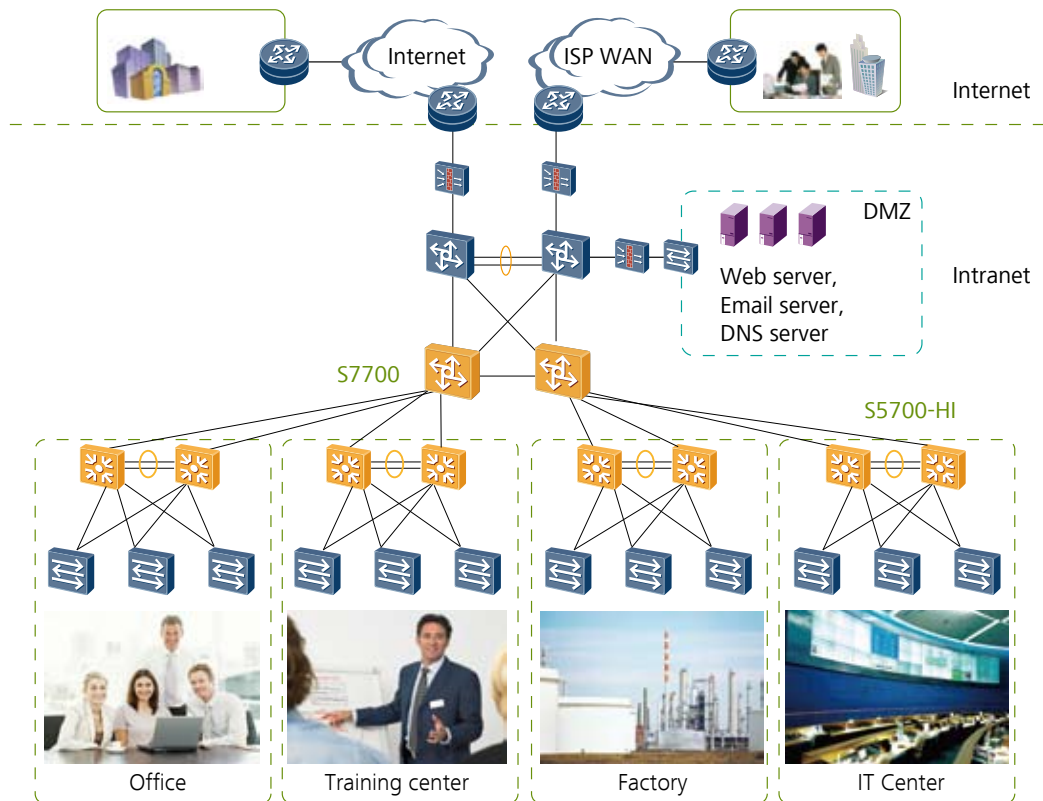
Item	S5700-28C-HI	S5700-28C-HI-24S	S5710-108C-PWR-HI
MPLS features	MPLS L3VPN MPLS L2VPN MPLS-TE MPLS QoS		
VPLS	Martini VPLS		
IP routing	Static routing, RIPv1, RIPv2, OSPF, IS-IS, BGP, and ECMP		
IPv6 features	Neighbor Discovery (ND) Path MTU (PMTU) IPv6 ping, IPv6 tracer 6to4 tunnel, ISATAP tunnel, and manually configured tunnel ACLs based on the source IPv6 address, destination IPv6 address, Layer 4 ports, or protocol type MLD v1/v2 snooping		
multicast	IGMP v1/v2/v3 snooping and IGMP fast leave Multicast forwarding in a VLAN and multicast replication between VLANs Multicast load balancing among member ports of a trunk Controllable multicast Port-based multicast traffic statistics IGMP v1/v2/v3, PIM-SM, PIM-DM, and PIM-SSM		
QoS/ACL	Rate limiting on packets sent and received by an interface Packet redirection Port-based traffic policing and two-rate three-color CAR Eight queues on each port WRR, DRR, PQ, WRR+PQ, and DRR+PQ queue scheduling algorithms WRED Re-marking of the 802.1p priority and DSCP priority Packet filtering at Layer 2 to Layer 4, filtering out invalid frames based on the source MAC address, destination MAC address, source IP address, destination IP address, port number, protocol type, and VLAN ID Rate limiting in each queue and traffic shaping on ports		
Security	User privilege management and password protection DoS attack defense, ARP attack defense, and ICMP attack defense Binding of the IP address, MAC address, interface, and VLAN Port isolation, port security, and sticky MAC Blackhole MAC address entries Limit on the number of learned MAC addresses 802.1x authentication and limit on the number of users on an interface AAA authentication, RADIUS authentication, HWTACACS+ authentication, and NAC SSH v2.0 Hypertext Transfer Protocol Secure (HTTPS) CPU defense Blacklist and whitelist		

Item	S5700-28C-HI	S5700-28C-HI-24S	S5710-108C-PWR-HI
OAM	Hardware OAM: EFM OAM CFM OAM Y.1731 performance test (hardware-level delay and jitter detection) BFD		Software OAM: EFM OAM CFM OAM Y.1731 performance test BFD
Management and maintenance	iStack (not supported by S5710-HI) MAC Forced Forwarding (MFF) Virtual cable test SNMP v1/v2/v3 RMON Web NMS System logs and alarms of different levels GVRP MUX VLAN 802.3az EEE sFlow NetStream Dying gasp (S5710-HI)		
Operating environment	Operating temperature: 0°C–50°C Relative humidity: 5%–95% (non-condensing)		
Input voltage	AC: Rated voltage range: 100 V to 240 V AC, 50/60 Hz Maximum voltage range: 90 V to 264 V AC, 50/60 Hz DC: Rated voltage range: –48 V to –60 V, DC Maximum voltage range: –36 V to –72 V, DC		
Dimensions (W x D x H, mm)	442x220 x43.6		442x470.0x87.2
Power consumption	< 76 W	< 80 W	< 1680 W (PD Power: 1440W)

Applications

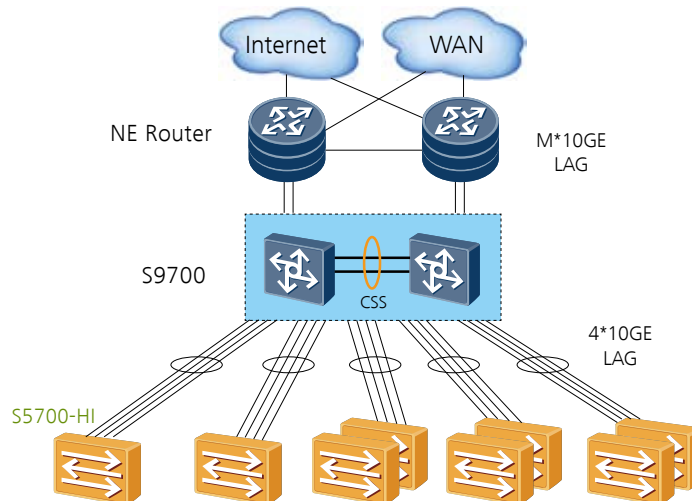
On Large-sized Enterprise Networks

The S5700-HI can function as an access device on a large-sized enterprise network or an aggregation device on a small-sized or medium-sized campus network. It supports link aggregation and dual-homing to improve network reliability.



In Data Centers

The S5700-HI can be used in a data center. It connects to gigabit servers and aggregates traffic from the servers to uplink devices through trunk links. If multiple servers are available, an S5700 stack can be used to facilitate network maintenance and improve network reliability.



Product List

Product Description

S5700-28C-HI-24S(24 Gig SFP,with 1 interface slot,without power module)

S5700-28C-HI(24 Ethernet 10/100/1000 ports,with 1 interface slot,without power module)

S5710-108C-PWR-HI(48 Ethernet 10/100/1000 PoE+ ports,8 10 Gig SFP+,with 4 interface slots,without power module)

2 10 Gig SFP+ interface card(used in S5700HI series)

4 10 Gig SFP+ interface card(used in S5700HI series)

4 Gig SFP interface card(used in S5700HI series)

16 Gig SFP Interface Card(used in S5710HI series)

16 Ethernet 10/100/1000 ports Interface Card(used in S5710HI series)

4 40 Gig QSFP+ Interface Card(used in S5710HI series)

4 10 Gig SFP+ Interface Card(used in S5710HI series)

170W DC Power Module(used in S5700HI series)

170W AC Power Module(used in S5700HI series)

350W AC Power Module(used in S5710HI series)

1150W AC PoE Power Module

For more information, visit <http://enterprise.huawei.com> or contact your local Huawei sales office.




Copyright © Huawei Technologies Co., Ltd. 2013. All rights reserved.

No part of this document may be reproduced or transmitted in any form or by any means without prior written consent of Huawei Technologies Co., Ltd.

Trademark Notice



HUAWEI, and  are trademarks or registered trademarks of Huawei Technologies Co., Ltd.
Other trademarks, product, service and company names mentioned are the property of their respective owners.

General Disclaimer

The information in this document may contain predictive statements including, without limitation, statements regarding the future financial and operating results, future product portfolio, new technology, etc. There are a number of factors that could cause actual results and developments to differ materially from those expressed or implied in the predictive statements. Therefore, such information is provided for reference purpose only and constitutes neither an offer nor an acceptance. Huawei may change the information at any time without notice.

HUAWEI TECHNOLOGIES CO., LTD.
Huawei Industrial Base
Bantian Longgang
Shenzhen 518129, P.R.China
Tel: +86 755 28780808

www.huawei.com